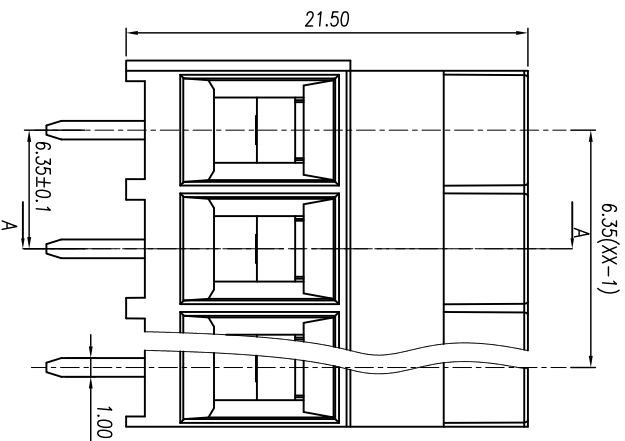
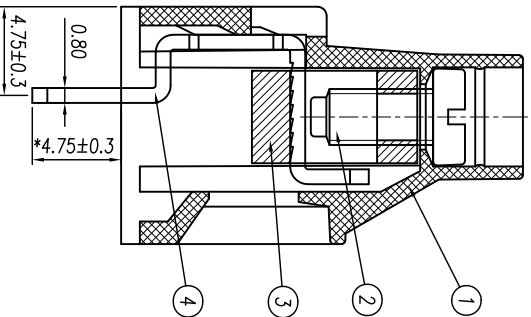
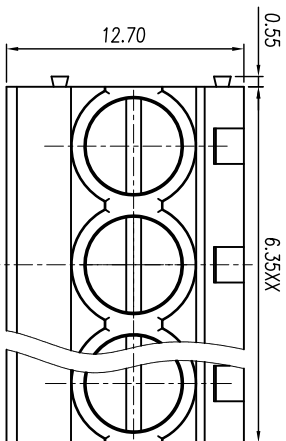
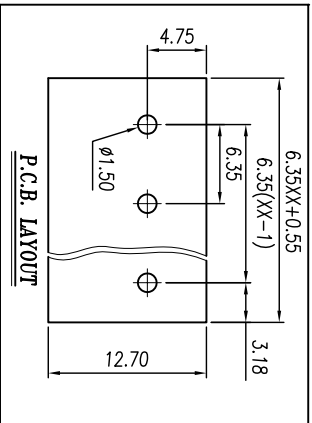




CIXI WANJIE ELECTRONIC CO., LTD

THE SPEC SHEET



Electrical

Standard	UL	IEC
Rated voltage	300V	450V
Rated current	30A	32A
Contact resistance	20mΩ	
Insulation resistance	500MΩ/DC500V	
Wire range	26~10AWG	4mm ²
Wrth standing voltage	AC 2000V/1 Min	

Mechanical

Torque	0.5Nm(4.43Lb.in)
Steip Length	6-7mm
Temp. Range	-40°C~+105°C

MAX Soldering +250°C, for 5 Sec

Dimensions

Pitch	6.35mm
Poles	2-24p

Material

Housing	PA66, UL94V-0
Screws	M3.0, Steel Zn plated
Pin header	Brass, Tin plated
Cage	Brass, Ni plated

linear dimension(Tolerances Standard GB/T 14486-2008)

tolerance	±0.1	±0.14	±0.19	±0.25	±0.32	±0.43	±0.57	±0.72	±0.88	±1.05	±1.25	0.5	0.025	0.06	0.12	0.4
variable range	6 to	6 to	10 to	10 to	18 to	18 to	30 to	30 to	50 to	50 to	80 to	80 to	120 to	120 to	160 to	200 to
tolerance	±0.1	±0.14	±0.19	±0.25	±0.32	±0.43	±0.57	±0.72	±0.88	±1.05	±1.25	0.5	0.025	0.06	0.12	0.4

UNITS	mm	SIZE	A4	SCALE	5:2
-------	----	------	----	-------	-----

CIXI WANJIE ELECTRONIC CO., LTD

TITLE	WJ635-6.35-XXP-1YY-00A
-------	------------------------

THIRD ANGLE PROJECTION

