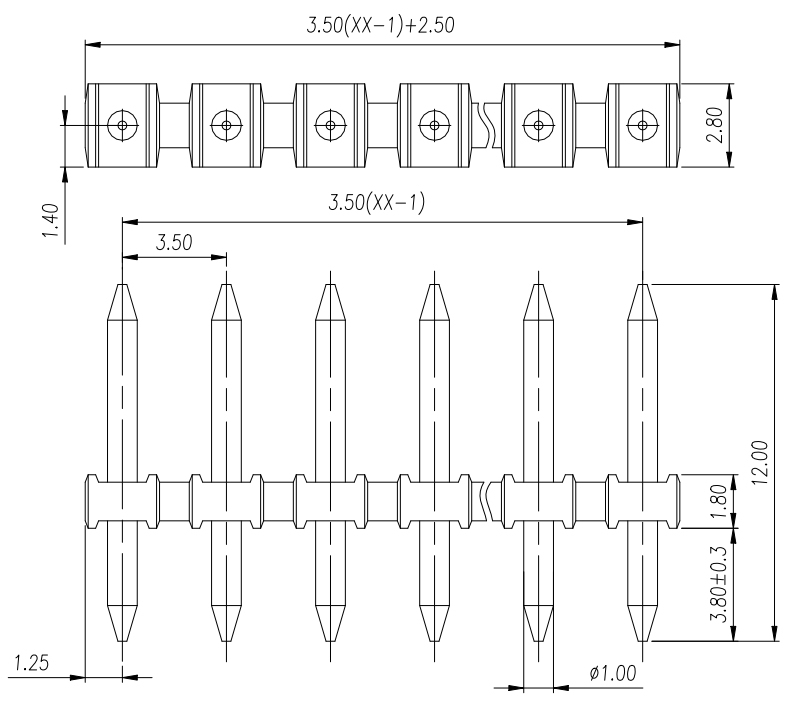
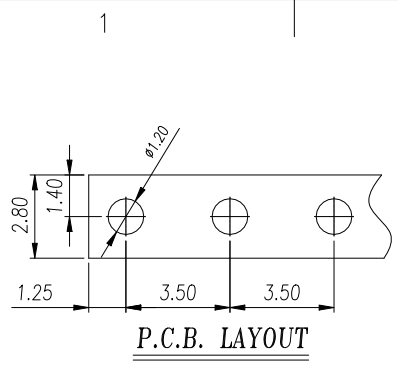


Transfer or duplication of this document as well as the utilization or communication of its contents are prohibited unless explicit authorization is granted. Violations will be liable for compensation. All rights reserved for patent, utility model or designs registrations. 除非给予明确授权，否则禁止转让、复制、利用、交流本文件的内容。侵犯者须承担赔偿责任。本公司保留对涉及发明、实用新型和外观设计的所有权利。



| General Tolerances | | | | | | | | — ▯ ⊥ | | |
|--------------------|-------|--------------|---------------|---------------|----------------|-----------------|----------------|----------------|-----------------|------|
| variable range | to 6 | over 6 to 10 | over 10 to 30 | over 30 to 60 | over 60 to 100 | over 100 to 160 | over 160 to 10 | over 10 to 100 | over 100 to 100 | |
| tolerance | ±0.20 | ±0.30 | ±0.50 | ±0.70 | ±1.00 | ±1.30 | ±1.60 | 0.10 | 0.30 | 0.60 |

| ITEM | NAME OF PART | MATERIAL | NOTES |
|------|--------------|--------------|-----------|
| 2 | Pin | Copper Alloy | Sn Plated |
| 1 | Housing | PBT | UL94V-0 |

| | | | | | | | |
|--|--------|------|----------|-------|-----|---|--------------|
| DES. | WangP | DATE | 23.11.28 | UNITS | mm | THIRD ANGLE PROJECTION | |
| CHK. | YangHJ | DATE | 23.11.28 | SIZE | A4 | TYPE: CUSTOMER DRAWING | SHEET 1 of 1 |
| APP. | JASON | DATE | 23.11.28 | SCALE | 4:1 | DRAWING TYPE: SP-03 | REV V0 |
| WANJIE CIXI WANJIE ELECTRONIC CO., LTD | | | | | | PART NO.: WJ333J-3.5-XXP-1Y-00A | |

| REVISION RECORD | | | | |
|-----------------|-------------|---------|----------|----------|
| REV. | DESCRIPTION | ECN No. | APPROVED | DATE |
| V0 | 行 | | WangP | 23.11.28 |

| UL/CUL Technical Data | | | |
|---|--|-------------|---------|
| Use Group | | B | C D |
| Rated Voltage [V] | | 300 | - 300 |
| Rated Current [A] | | 8 | - 8 |
| Wire Range Solid/Stranded [AWG] | | - | |
| Withstanding Voltage | | 1600V/1Min | |
| IEC Technical Data IEC60947-7-4 | | | |
| Oversoltage Category | | III | III II |
| Contamination Class | | 3 | 2 2 |
| Rated Voltage [V] | | 160 | 250 250 |
| Rated Current [A] | | 8 | 8 8 |
| Impulse withstand voltage [KV] | | 2.5 | 2.5 2.5 |
| Conductor cross section Solid/ flexible [mm²] | | - | |
| Other Data | | | |
| Pitch / Poles [mm] / [P] | | 3.5 / 02~24 | |
| Stripping Length [mm] | | - | |
| Screw/ Torque(Max) [N.m] | | - | |
| Operating temperature [°C] | | -30~120 | |