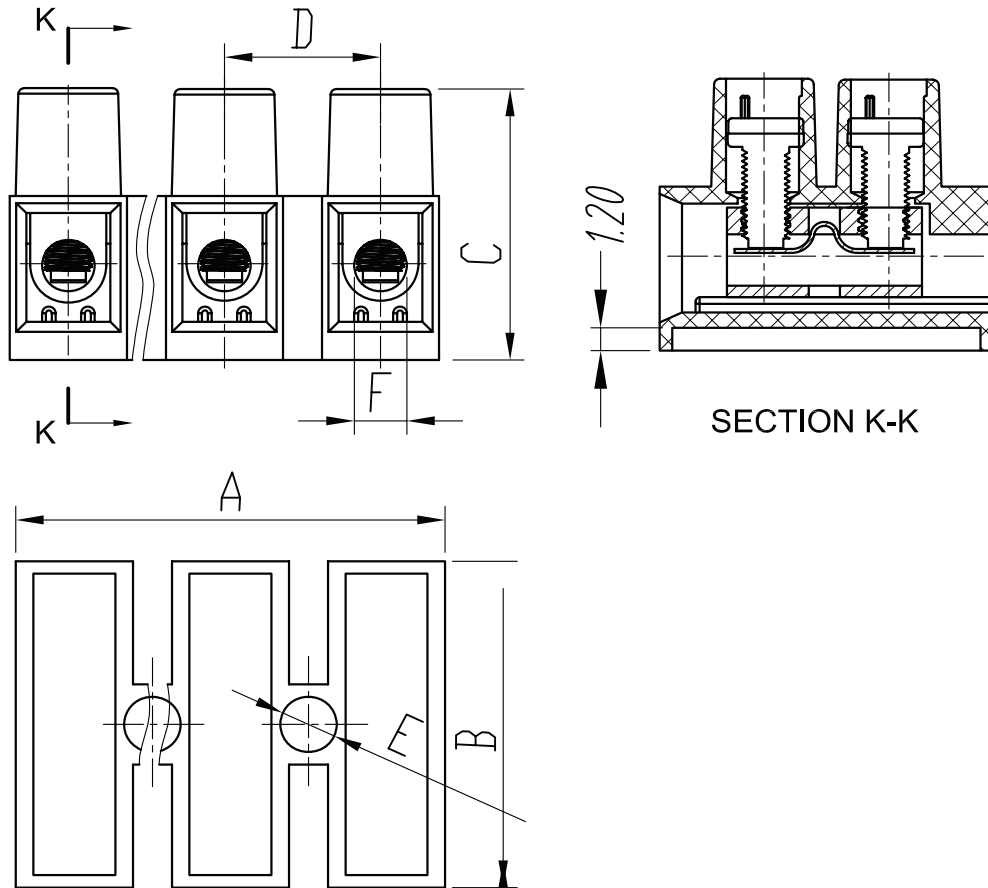




CIXI WANJIE ELECTRONIC CO., LTD

product specification



Model	mm ²	UL		IEC		Screw	Unit	Dimensions (mm/in)					
		Amp	Volt	Amp	Volt			A	B	C	D	E	F
MY8HW-1.2	1.5	17.5A	300V	24A	450V	M2.6X5	(mm)	94.2	17.20	14.20	8.00	3.00	2.80
MY10HW-1.2	2.5	28A	300V	37A	750V	M3.0X6	(mm)	116.5	20.00	17.20	10.00	3.50	3.30
MY12HW-1.2	6.0	41A	600V	45A	750V	M3.5X7	(mm)	140.7	23.80	19.00	12.00	3.90	3.90
MY14HW-1.2	10.0	50A	600V	57A	750V	M4X9	(mm)	158.0	25.60	22.10	13.50	4.40	4.80
MY16HW-1.2	16.0	65A	600V	76A	750V	M4X9	(mm)	170.0	31.80	25.00	14.50	4.20	6.00

Wire Protector

Model: MY□HW-1.2

Base: With 1.2mm elevated base

Screws: steel Ni plated

Clamp: Brass Ni plated

Housing material: PA66, UL94V-2

Temp. Range: -40 °C ~ +105 °C

Poles Available: 2p-12p

TOLERANCES EXCEPT AS NOTED

variable range	linear dimension				fillet	chamfer	∠ short angle sid				≡	-	□	//	⊥	
	to 6	to 30	to 120	to 480			to 6	to 10	to 50	to 120						to 5
tolerance	±0.1	±0.2	±0.3	±0.5	±0.2	±0.5	±1	1°	30'	20'	10'	0.5	0.025	0.06	0.12	0.4

UNITS	mm	SIZE	A4	SCALE	FIRST ANGLE PROJECTION	
CIXI WANJIE ELECTRONIC CO., LTD						
					NAME	MY8HW-1.2 MY10HW-1.2 MY12HW-1.2 MY14HW-1.2 MY16HW-1.2