

IP67 SEALED USB-C PANEL MOUNT



BCU/BPCU/BRU SERIES

BCU
Mates with:
BPCU, BRU

BPCU
Mates with:
BCU

BRU
Mates with:
BCU

BCU	END 1	PLATING OPTION	ASSEMBLED LENGTH	END 2 OPTION	STYLE
	-C = Sealed Type C Plug	-S = 30 μ" (0.76 μm) Gold	-0.50 = .5 meter -1.00 = 1 meter -2.00 = 2 meters	-UC = Unsealed Type C Plug -SC = Sealed Type C Plug -BC = Blunt Cut	-P = Plastic
Standard Lengths					

SPECIFICATIONS

Overmold & Inner Mold:
PVC, Black (BCU)

Lock Nut:
Thermoplastic, Black (BCU)

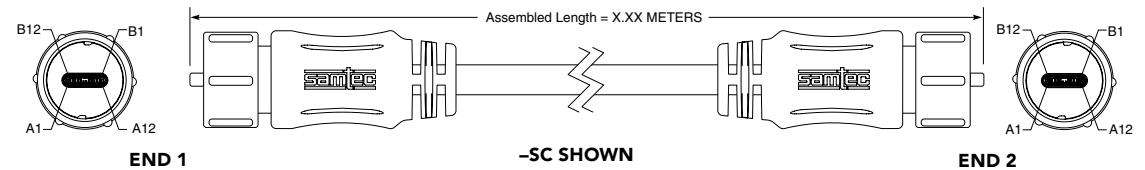
Rubber Pad:
Silicone, Black (BCU)

Housing Material:
Thermoplastic, Black (BPCU, BRU)

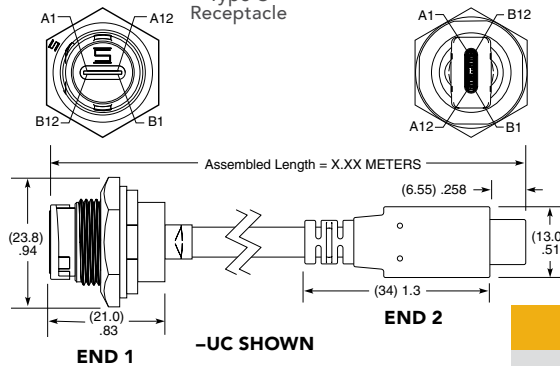
Gasket Material:
Silicone, Black (BPCU, BRU)

Hex Nut:
Thermoplastic, Black (BPCU, BRU)

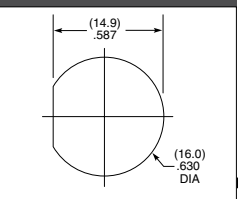
Operating Temp Range:
-40 °C to +85 °C



BPCU	END 1	PLATING OPTION	ASSEMBLED LENGTH	END 2 OPTION	STYLE
	-C = Sealed Type C Receptacle	-S = 30 μ" (0.76 μm) Gold	-0.25 = .25 meter -0.50 = .5 meter -0.75 = .75 meter -1.00 = 1 meter	-UC = Unsealed Type C Plug -BC = Blunt Cut	-P = Plastic
Standard Lengths					



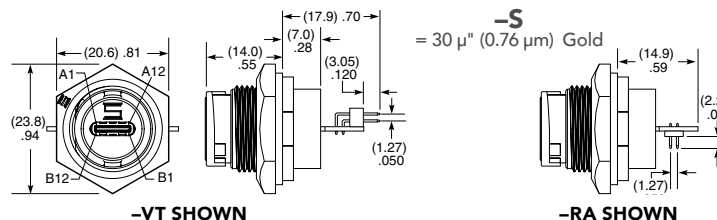
PANEL OPENING



DUST CAP

DCA-BRU-C-01

BRU	C	PLATING OPTION	LEAD STYLE	STYLE
		-S = 30 μ" (0.76 μm) Gold	-VT = Vertical -RA = Right-angle	-P = Plastic



Note:
Some lengths, styles and options are non-standard, non-returnable