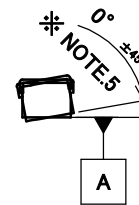
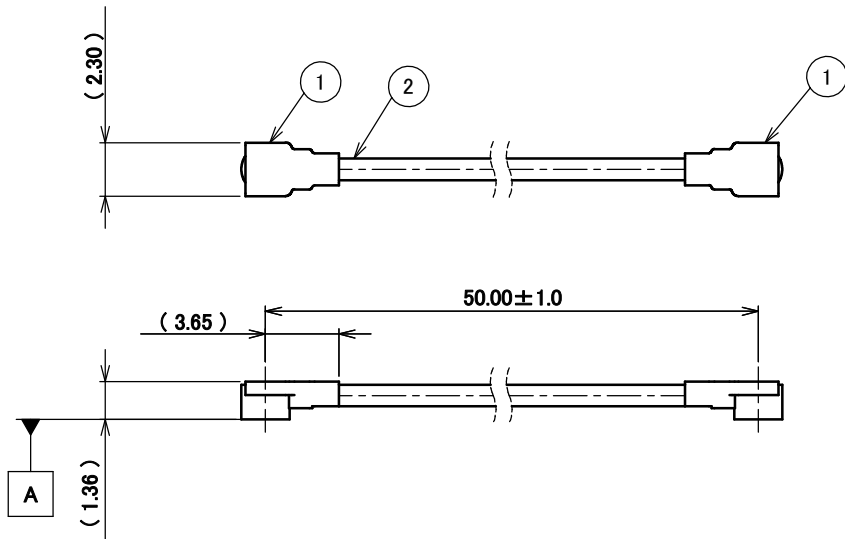


PART NO.

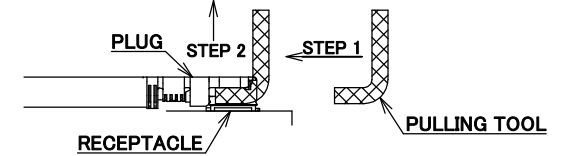
8-23-0116

PLEASE CONTACT I-PEX FOR REQUESTS OTHER THAN THIS SPECIFICATIONS.
PLEASE NOTE IF SPECIFICATIONS CHANGE, PART NO. WILL ALSO CHANGE.

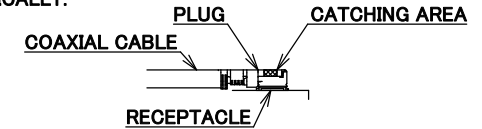


NOTES

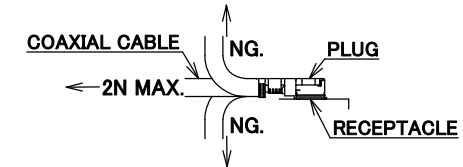
1. SUGGESTIONS FOR MATING & UNMATING OPERATION.
 - 1-1. MATING
MATE THE CONNECTOR VERTICALLY,
ALIGNING THE MATING AXIS ON PLUG AND RECEPTACLE.
DO NOT SLANT MATE.
 - 1-2. UNMATING
 - 1-2-1.
UNMATING BY PULLING TOOL.
[P/N 90873-0001 (MHF 4L)]
USE THE PULLING TOOL AS THE FOLLOWING, AND
PULL PLUG TO VERTICAL DIRECTION AS DIRECTLY AS POSSIBLE.



- 1-2-2.
UNMATING DIRECTLY BY HAND.
HOLD THE CATCHING AREA ON PLUG AND PULL THE PLUG
VERTICALLY.



2. PACKING : PLASTIC BAG
3. PERMISSIBLE LOAD ON THE CABLE AFTER MATING



4. CABLE CRIMP STRENGTH : 15N MIN.
5. ORIENTATION OF CONNECTORS : 0° ±45°

| | | | |
|-----|----------------|-----|--------------------------------------|
| 2 | CABLE | 1 | AWG#30 Φ 1.37, BRAIDED SHIELD, BLACK |
| 1 | CONNECTOR-1, 2 | 2 | MHF 4L Ni Top |
| NO. | DESCRIPTION | QTY | REMARK |

CONSTRUCTIONS

| | | | | | | | |
|-----------------|---------|------------------|------------|--------------------|-------------|-----------|---------------|
| ANGLE | ±2° | 6 OVER 30 MAX. | ±0.3 | PROJECTION | SERIES No. | H-230031M | CUSTOMER COPY |
| 6 MAX. | ±0.2 | 30 OVER 120 MAX. | ±0.5 | GENERAL TOLERANCE. | TITLE | | |
| DWG. | M.Toida | DATE | 2023/09/27 | CHK. | K.Yufu | DWG. No. | 8-23-0116 |
| REV. | ECN | BY | DATE | APP. | Y.Hashimoto | SIZE | A3 |
| REVISION RECORD | | | | TITLE | | SCALE | 5:1 |
| | | | | MHF® | | UNIT | mm |
| | | | | 4L-4L CABLE137-1 | | SIZE | 1/1 |
| | | | | | | SHEET | 0 |



Halogen Free



RoHS Compliant