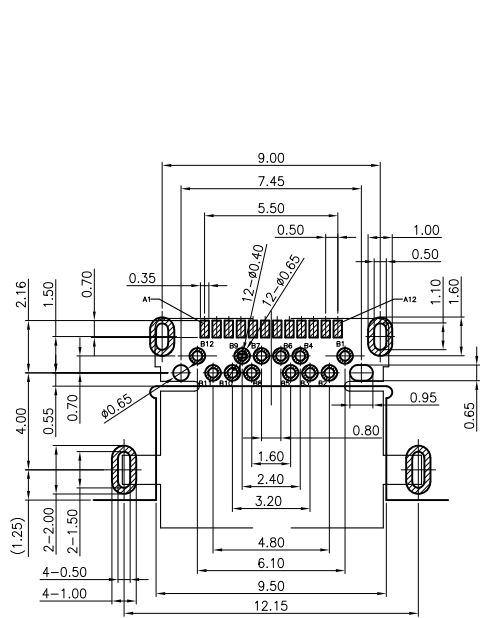
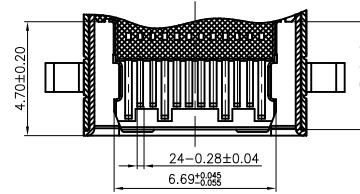
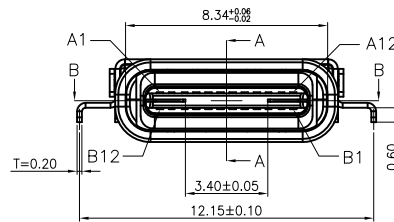
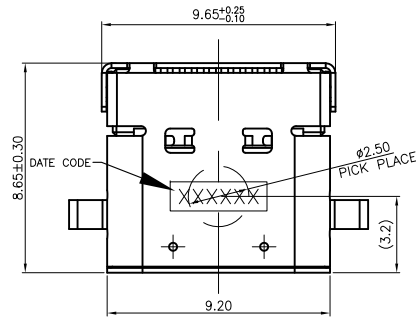


APPROVED: \_\_\_\_\_  
 DATE: \_\_\_\_\_ TITLE: \_\_\_\_\_

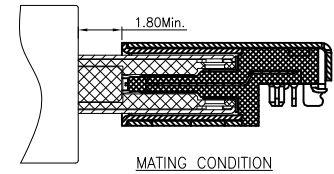
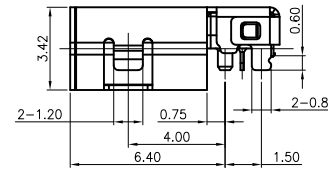
Rev	AWO #	Description	Date	Appr
-		RELEASED	8/2/18	
A		UPDATE DRAWING	8/26/20	AY/RC



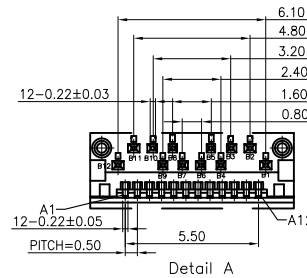
RECOMMEND P.C.B LAYOUT (COMPONENT SIDE)  
 TOLERANCE FOR PCB LAYOUT IS ± 0.05  
 KEEP OUT AREA



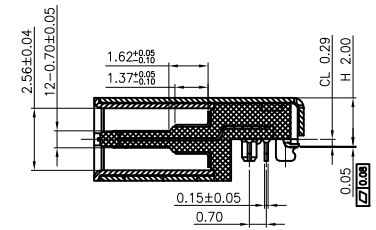
SECTION B-B



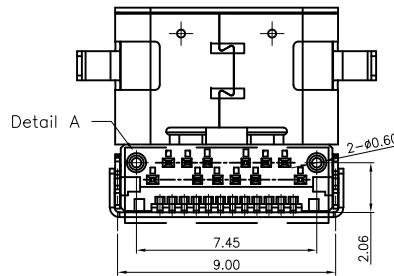
MATING CONDITION



Detail A



SECTION A-A



Detail A

PACKAGED ON TAPE & REEL

SPECIFICATIONS:  
 Material:  
 Insulator: Hi-temp thermoplastic, rated UL 94V-0  
 Insulator color: Black  
 Contacts: Copper Alloy  
 Shell: Stainless Steel, Nickel plated  
 Cover Shell: Stainless Steel, Nickel plated  
 Inner Ground Cover Shell: Stainless Steel, Clean  
 Mid plate: Stainless Steel, Clean  
 Plating:  
 Gold flash over Nickel underplate on Contact area  
 Matte Tin over Nickel underplate on Solder tails  
 Electrical:  
 Current rating: 5A for Collectively Power Supply Pin (A1,A4,A9,A12,B1,B4,B9,B12)  
 1.25A for Vconn Pin  
 0.25A for other Signal Pin.  
 Contact resistance: 40 mohms max. (Initial)  
 10 mohms max. (After test) @ 20 mV, 100 mA  
 Insulation resistance: 100 Mohms min.  
 Dielectric withstanding: 100 VAC RMS  
 Mechanical:  
 Insertion force: 5~20 N  
 Withdrawal force: 8~20N Initial test; 6~20N Durability After Test  
 Durability: 10,000 Cycles  
 Temperature Rating:  
 Operating temperature: -40°C to +85°C  
 Environmental:  
 Lead free, RoHS compliant.



UNLESS OTHERWISE SPECIFIED ALL DIMENSIONS ARE MILLIMETERS TOLERANCES: EXCEPT AS NOTED	
MM	ANGEL
X. ± 0.50	± 2°
X.X ± 0.30	
X.XX ± 0.20	
X.XXX ± 0.10	
APPROVALS	
DRAWN	HR
CHECKED	LW
APPROVED	
DATE	
8/2/18	
8/2/18	

<b>ADAM TECH</b>		909 Rahway Avenue, Union, NJ 07083 Phone: 908-687-5000 Fax: 908-687-5710	
TITLE			
UNIVERSAL SERIAL BUS, TYPE C, FEMALE, DIP TYPE, EDGE HANG			
SIZE	PART NO.	REV.	
X	USB-C31-S-RA-EH2.0B-BK-T/R	A	
REF:	S00197C	SCALE:	NTS
		SHEET 1 OF 1	