

IEC Appliance Inlet C14 or C18 with Filter, Protection Degree IP65 into the Appliance, Fuseholder 1- or 2-pole, Front or Rear Mounting



IEC connector C14 or C18 with filter
 Screw-on from front side

With V-Lock Connection
 white
 5707.xxxx.xxx.22 with IP54 V-Lock cord connection

from front side
 white
 5707 with IP54 Inlet Gasket



See below:
[Approvals and Compliances](#)

Description

- Panel mount :
 Screw-on version from front or rear side , Screws with sealing are included
- 4 Functions :
 Appliance Inlet protection class I or II , Line filter in standard and medical version , Fuseholder for fuse-links 5 x 20 mm , IP65 protection into the appliance
- Option suffix ".22" offers IP54 for the power input in combination with V-Lock cordsets
- Quick connect terminals 6.3 x 0.8 mm

Unique Selling Proposition

- Sealed power entry module
- Strong in Design and Safety
- IP 65 protection to the appliance
- IP 54 protection to the cord connection

Characteristics

- Extreme robust design
- All single elements are already wired
- Screw type fuse carrier, slotted
- With EMC-shield
- Especially for applications in rough environments (see technical data)
- For applications according IEC/UL 62368-1 we recommend variants with bleed resistor
 Suitable for use in medical equipment according to IEC/UL 60601-1 (1 MOOP, 1 MOPP)

Other versions on request

- Class X1- and Y1-capacitors for enhanced withstand voltage
- Medical Version (M80)
- Additional factory-mounted sealing (IP54) of power input
- Version with current rating 3 A

Weblinks

[pdf data sheet](#), [html datasheet](#), [General Product Information](#), [Approvals](#), [Distributor-Stock-Check](#), [Accessories](#), [Detailed request for product](#)

Newly available variants corresponding to V-Lock mating cordset. The connector is equipped with a notch intended for use with the latching cordset. The cord latching system prevents against accidental removal of the cordset.

Technical Data

Ratings IEC	1 - 8A @ Ta 40 °C / 250VAC; 50Hz	Appliance inlet/-outlet	C14 / C18 acc. to IEC 60320-1
Ratings UL/CSA	1 - 8A @ Ta 40 °C / 250VAC; 60Hz		UL 498, CSA C22.2 no. 42 (for cold conditions) pin-temperature 70 °C, 8A, Protection Class I or II
Leakage Current	standard < 0.5 mA (250 V / 60Hz) medical < 5 µA (250 V / 60 Hz)	Fuseholder	1-/2-pole, Shocksafe category PC2 acc. to IEC 60127-6, for fuse-links 5 x 20mm
Dielectric Strength	> 1.7 kVDC between L-N > 2.7 kVDC between L/N-PE Test voltage (2 sec) > 4.0 kVDC Protection class II between L/N-PE	Rated Power Acceptance @ Ta 23 °C	5 x 20: 1.6W 1-pole/ 1,2W 2-pole per pole
Allowable Operation Temperature	-25 °C to 85 °C	Power Acceptance @ Ta > 23 °C	Admissible power acceptance at higher ambient temperature see derating curves
Climatic Category	25/085/21 acc. to IEC 60068-1	Line Filter	Standard and Medical Version, IEC 60939, UL 60939-3, CSA C22.2 no. 8 Technical Details
IP-Protection	front side IP65 acc. to IEC 60529 rear-side IP65 acc. to IEC 60529	MTBF	> 2'800'000h acc. to MIL-HB-217 F
Protection Class	Suitable for appliances with protection class I or II acc. to IEC 61140		
Terminal	Quick connect terminals 6.3 x 0.8 mm		
Panel Thickness S	Screw, max 3mm Mounting screw torque max 0.6Nm 2 screws M3 with sealing are provided		
Material	black / white / metallic, UL 94V-0		

Approvals and Compliances




Detailed information on product approvals, code requirements, usage instructions and detailed test conditions can be looked up in [Details about Approvals](#)

SCHURTER products are designed for use in industrial environments. They have approvals from independent testing bodies according to national and international standards. Products with specific characteristics and requirements such as required in the automotive sector according to IATF 16949, medical technology according to ISO 13485 or in the aerospace industry can be offered exclusively with customer-specific, individual agreements by SCHURTER.

Approvals









The approval mark is used by the testing authorities to certify compliance with the safety requirements placed on electronic products.

Approval Reference Type: 5707

Approval Logo	Certificates	Certification Body	Description
	VDE Approvals	VDE	Certificate Number: 40016382
	UL Approvals	UL	UR File Number: E495089
	CQC Approvals	CQC	CQC Certificate Number: CQC21001310097




Product standards

Product standards that are referenced

Organization	Design	Standard	Description
	Designed according to	IEC 60320-1	Appliance couplers for household and similar general purposes
	Designed according to	IEC 60939	Passive filters for suppressing electromagnetic interference
	Designed according to	IEC 60127-6	Miniature fuses. Part 6. Fuse-holders for miniature fuse-links
	Designed according to	IEC 61058-1	Switches for appliances. Part 1. General requirements
	Designed according to	UL 498	Standard for Attachment Plugs and Receptacles
	Designed according to	UL 60939-3	Passive filters for suppressing electromagnetic interference
	Designed according to	CSA C22.2 no. 42	General Use Receptacles, Attachment Plugs, and Similar Wiring Devices
	Designed according to	CSA C22.2 no. 8	Electromagnetic interference (EMI) filters









Application standards

Application standards where the product can be used

Organization	Design	Standard	Description
	Suitable for applications acc.	IEC/UL 62368-1	Audio/video, information and communication technology equipment - Part 1: Safety requirements
	Suitable for applications acc.	IEC 60601-1	Medical electrical equipment - Part 1: General requirements for basic safety and essential performance
	Suitable for applications acc.	IEC 60335-1	Safety of electrical appliances for household and similar purposes. Meets the requirements for appliances in unattended use. This includes the enhanced requirements of glow wire tests acc. to IEC 60695-2-11 or -12 & -13.

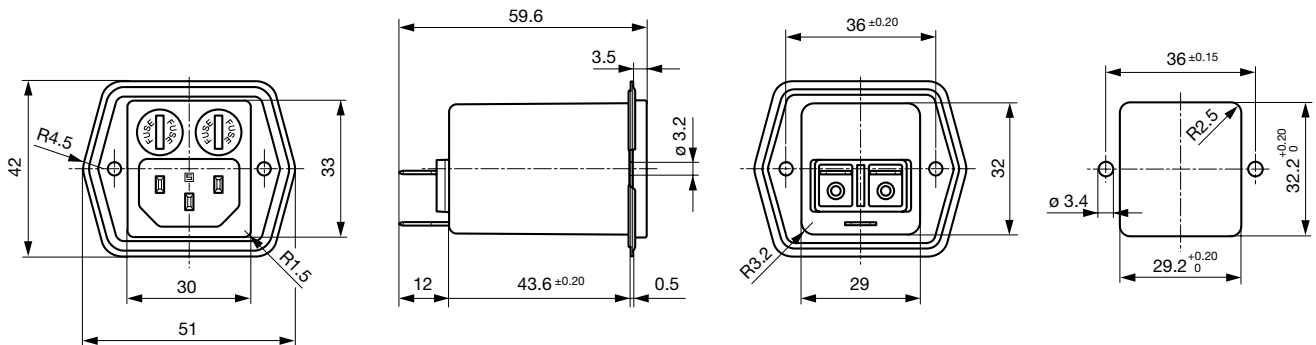
Compliances

The product complies with following Guide Lines

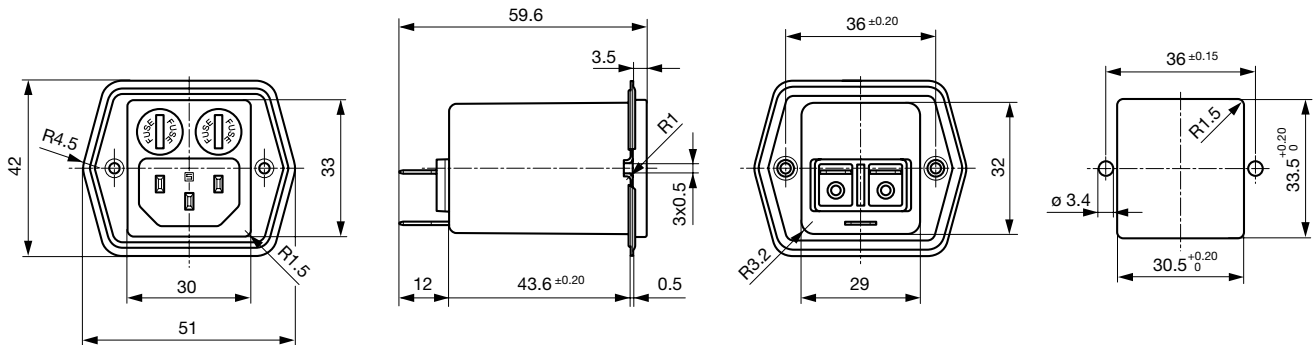
Identification	Details	Initiator	Description
	CE declaration of conformity	SCHURTER AG	The CE marking declares that the product complies with the applicable requirements laid down in the harmonisation of Community legislation on its affixing in accordance with EU Regulation 765/2008.
	UKCA declaration of conformity	SCHURTER AG	The UKCA marking declares that the product complies with the applicable requirements laid down in the British Amendment of Regulation (EC) 765/2008.
	RoHS	SCHURTER AG	Directive RoHS 2011/65/EU, Amendment (EU) 2015/863
	China RoHS	SCHURTER AG	The law SJ / T 11363-2006 (China RoHS) has been in force since 1 March 2007. It is similar to the EU directive RoHS.
	REACH	SCHURTER AG	On 1 June 2007, Regulation (EC) No 1907/2006 on the Registration, Evaluation, Authorization and Restriction of Chemicals 1 (abbreviated as "REACH") entered into force.
		SCHURTER AG	V-Lock system are based on a matching plug-dose combination. The connector is equipped with a notch intended for use with the latching cordset. The cord latching system prevents against accidental removal of the cordset.
	White Paper Glow wire test	SCHURTER AG	Meets the requirements of IEC 60335-1 for appliances in unattended use. This includes the enhanced requirements of glow wire tests acc. to IEC 60695-2-11 or -12 &-13.
	Medical Equipment	SCHURTER AG	Suitable for use in medical equipment according to IEC/UL 60601-1 (1 MOOP, 1 MOPP)

Dimension [mm]

Mounting from front side

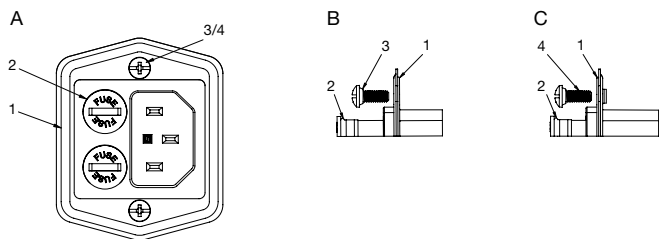


Mounting from rear side



Fixing Screws M3

Assembly Instructions
 Mounting standard version



A) front view
 B) detail front mounting type
 C) detail rear mounting type

- 1) sealing of flange
- 2) sealing of fuseholder
- 3) sealing of screw hole (front mounting type: sealing ring on screw head)
- 4) sealing of screw hole (rear mounting type: sealing on screw thread)

Important:

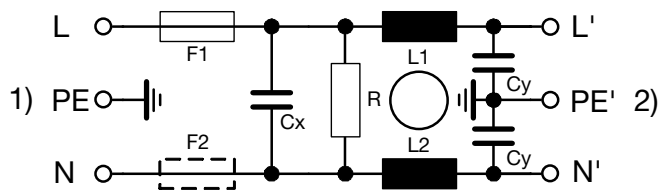
- use supplied fuse caps (2) and mounting screws (3/4)
- optimal sealing requires even and solid panel opening
- recommended tightening torque for mounting screws (3/4): 0.6 Nm
- recommended tightening torque for fuse holder (2): 0.4 Nm
- IP65 protection between the inlet and connector pins, but no IP rating between the connector pins and the plug of the power cord!

Technical Data of Filter-Components

Rated Current [A]	Filter-Type	Inductances L [mH]	Capacitance CX [nF]	Capacitance CY [nF]	R [MΩ]
1	Standard version	2 x 12	100	2.2	1
2	Standard version	2 x 5.2	100	2.2	1
4	Standard version	2 x 2	100	2.2	1
6	Standard version	2 x 0.8	100	2.2	1
8	Standard version	2 x 0.4	100	2.2	1
1	Medical Version (M5)	2 x 12	100	-	1
2	Medical Version (M5)	2 x 5.2	100	-	1
4	Medical Version (M5)	2 x 2	100	-	1
6	Medical Version (M5)	2 x 0.8	100	-	1
8	Medical Version (M5)	2 x 0.4	100	-	1
2	Medical Version (M80)	2 x 5.2	100	0.47	1
4	Medical Version (M80)	2 x 2	100	0.47	1

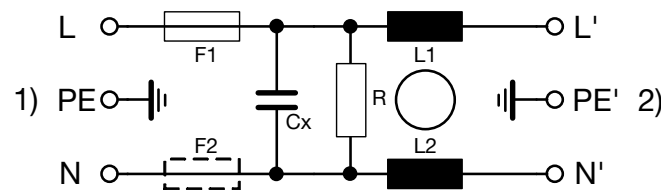
Diagrams

Standard version



1) Line
 2) Load

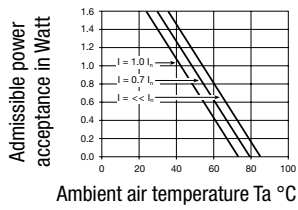
Medical Version (M5)



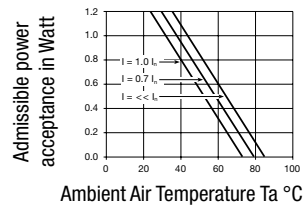
1) Line
 2) Load

Derating Curves

1-pole



2-pole

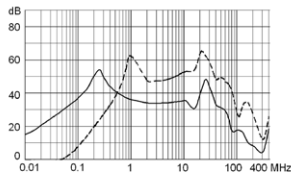


Attenuation Loss

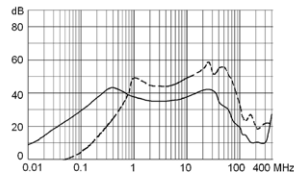
- - - 50Ω differential mode ____ 50Ω common mode

Standard version

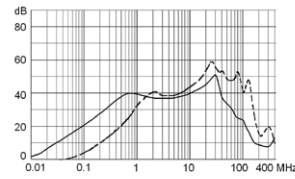
1 A



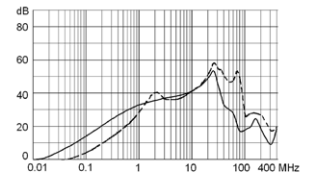
2 A



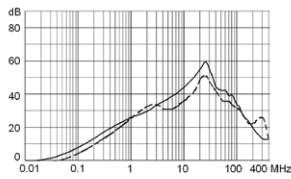
4 A



6 A

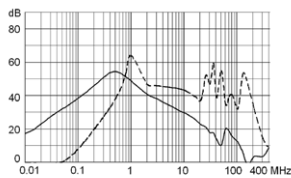


8 A

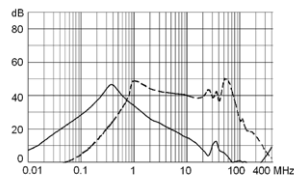


Medical version (M5)

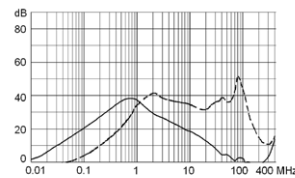
1 A



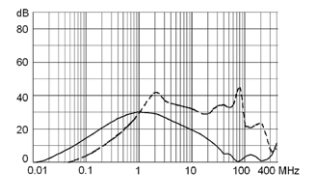
2 A



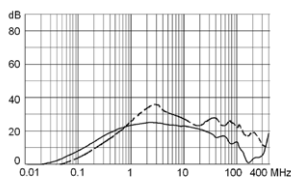
4 A



6 A



8 A



Variants

Rated Current [A]	Filter-Type	Mounting side	Protection Class	Power Cord IP-protection	Fuseholder	Color	V-Lock	Order Number
1	Standard version	Front Side	I	-	1-pole	black		5707.0101.112
1	Standard version	Rear Side	I	-	1-pole	black		5707.0101.113
2	Standard version	Front Side	I	-	1-pole	black		5707.0201.112
2	Standard version	Rear Side	I	-	1-pole	black		5707.0201.113

Rated Current [A]	Filter-Type	Mounting side	Protection Class	Power Cord IP-protection	Fuseholder	Color	V-Lock	Order Number
4	Standard version	Front Side	I	-	1-pole	black		5707.0401.112
4	Standard version	Rear Side	I	-	1-pole	black		5707.0401.113
6	Standard version	Front Side	I	-	1-pole	black		5707.0601.112
6	Standard version	Rear Side	I	-	1-pole	black		5707.0601.113
8	Standard version	Front Side	I	-	1-pole	black		5707.0801.112
8	Standard version	Rear Side	I	-	1-pole	black		5707.0801.113
1	Standard version	Front Side	I	-	2-pole	black		5707.0101.312
1	Standard version	Rear Side	I	-	2-pole	black		5707.0101.313
2	Standard version	Front Side	I	-	2-pole	black		5707.0201.312
2	Standard version	Rear Side	I	-	2-pole	black		5707.0201.313
4	Standard version	Front Side	I	-	2-pole	black		5707.0401.312
4	Standard version	Rear Side	I	-	2-pole	black		5707.0401.313
4	Standard version	Rear Side	I	IP54	2-pole	black	●	5707.0401.313.22
6	Standard version	Front Side	I	-	2-pole	black		5707.0601.312
6	Standard version	Rear Side	I	-	2-pole	black		5707.0601.313
8	Standard version	Front Side	I	-	2-pole	black		5707.0801.312
8	Standard version	Rear Side	I	-	2-pole	black		5707.0801.313
8	Standard version	Rear Side	I	-	2-pole	black	●	5707.0801.313.21
1	Medical Version (M5)	Front Side	I	-	2-pole	black		5707.0103.312
1	Medical Version (M5)	Rear Side	I	-	2-pole	black		5707.0103.313
1	Medical Version (M5)	Rear Side	I	-	2-pole	black	●	5707.0103.313.21
2	Medical Version (M5)	Front Side	I	-	2-pole	black		5707.0203.312
2	Medical Version (M5)	Rear Side	I	-	2-pole	black		5707.0203.313
2	Medical Version (M5)	Rear Side	I	-	2-pole	black	●	5707.0203.313.21
4	Medical Version (M5)	Rear Side	I	IP54	2-pole	black	●	3-100-897
4	Medical Version (M5)	Front Side	I	-	2-pole	black		5707.0403.312
4	Medical Version (M5)	Rear Side	I	-	2-pole	black		5707.0403.313
4	Medical Version (M5)	Rear Side	I	-	2-pole	black	●	5707.0403.313.21
6	Medical Version (M5)	Front Side	I	-	2-pole	black		5707.0603.312
6	Medical Version (M5)	Rear Side	I	-	2-pole	black		5707.0603.313
6	Medical Version (M5)	Rear Side	I	-	2-pole	black	●	5707.0603.313.21
6	Medical Version (M5)	Front Side	I	-	2-pole	white		5707.0613.312
6	Medical Version (M5)	Front Side	I	-	2-pole	white	●	5707.0613.312.21
6	Medical Version (M5)	Rear Side	I	-	2-pole	white		5707.0613.313
6	Medical Version (M5)	Rear Side	I	-	2-pole	white	●	5707.0613.313.21
8	Medical Version (M5)	Front Side	I	-	2-pole	black		5707.0803.312
8	Medical Version (M5)	Front Side	I	IP54	2-pole	black	●	5707.0803.312.22
8	Medical Version (M5)	Rear Side	I	-	2-pole	black		5707.0803.313
8	Medical Version (M5)	Rear Side	I	-	2-pole	black	●	5707.0803.313.21
1	Medical Version (M5)	Front Side	II	-	2-pole	black		5707.0103.412
1	Medical Version (M5)	Rear Side	II	-	2-pole	black		5707.0103.413
2	Medical Version (M5)	Front Side	II	-	2-pole	black		5707.0203.412
2	Medical Version (M5)	Rear Side	II	-	2-pole	black		5707.0203.413
4	Medical Version (M5)	Front Side	II	-	2-pole	black		5707.0403.412
4	Medical Version (M5)	Rear Side	II	-	2-pole	black		5707.0403.413
6	Medical Version (M5)	Front Side	II	-	2-pole	black	●	3-155-999

Rated Current [A]	Filter-Type	Mounting side	Protection Class	Power Cord IP-protection	Fuseholder	Color	V-Lock	Order Number
6	Medical Version (M5)	Front Side	II	-	2-pole	black		5707.0603.412
6	Medical Version (M5)	Rear Side	II	-	2-pole	black		5707.0603.413
8	Medical Version (M5)	Front Side	II	-	2-pole	black		5707.0803.412
8	Medical Version (M5)	Rear Side	II	-	2-pole	black		5707.0803.413

Availability for all products can be searched real-time: <https://www.schurter.com/en/info-center/support-tools/stock-check-distributors>

Packaging unit 10 Pcs

Accessories

Description



Wire_Harness
 Wire harness for SCHURTER products



RC320
 Rear Cover for Power Entry Module

Mating Outlets/Connectors

Category / Description

[Connector Overview complete](#)



4782 Mounting: Power Cord, 3 x 1 mm ² / 3 x 18 AWG, Cable, Connector: IEC C13	4782
4785 Mounting: Power Cord, 3 x 1 mm ² / 3 x 18 AWG, Cable, Connector: IEC C13	4785
4300-06 Mounting: Power Cord, 3 x 1 mm ² / 3 x 18 AWG, Cable, Connector: IEC C13	4300-06
4781 Mounting: Power Cord, Cable, Connector: IEC C15	4781
4784 Mounting: Power Cord, 3 x 1 mm ² / 3 x 18 AWG, Cable, Connector: IEC C15	4784

[Interconnection Cord Overview complete](#)



Cord Sets 10 A, Interconnection, 2.0 m, IEC H05VV-F3G1.0, black	6007.0204
Cord Sets 10 A, Interconnection, 1.0 m, Connector IEC C13, H05VV-F3G1.0, black	6007.0212
Cord Sets 10 A, Interconnection, 2.0 m, Connector IEC C13, H05VV-F3G1.0, black	6007.0214

Category / Description

[Power Supply Cord Overview complete](#)



Cord Sets 10 A, Europlug, 2.5 m, Connector IEC C13, H05VV-F3G1.0, black	6004.0215
Cord Sets 10 A, Europlug, 2.5 m, Connector IEC C13, H05VV-F3G1.0, black	6003.0215
Cord Sets 10 A, uninsulated wires, 2.0 m, Connector IEC C13, H05VV-F3G1.0, black	6000.0224
Cord Sets 10 A, uninsulated wires, 2.0 m, Connector IEC C13, H05VV-F3G1.0, black	6000.0214
Cord Sets 10 A, United Kingdom, 2.5 m, Connector IEC C13, H05VV-F3G1.0, black	6044.0215
...	

[Power Supply or Interconnection Cord Overview complete](#)



Cord Sets 10 A, United Kingdom, 2.0 m, Connector IEC H05VV-F3G1.0, black	6044.0204
--	-----------

Mating Outlets/Connectors shuttered

[Connector Overview complete](#)



4783 Mounting: Power Cord, 3 x 1 mm ² / 3 x 18 AWG, Cable, Connector: IEC C13	4783
--	------

[Power Cord Overview complete](#)



SC54C13KS, Overview, V-Lock cord retaining, diverse Connector IEC C13, diverse, black	SC54C13KS
VAC13KS, Overview, V-Lock cord retaining, diverse Connector IEC C13, diverse, black	VAC13KS
VAC17KS, V-Lock cord retaining, diverse m, Connector IEC C17, diverse, black / grey / white	VAC17KS