



Automotive Parts > Automotive Cable Assemblies > Electric, Hybrid & Fuel Cell Cable Assemblies



Operating Voltage: **850 VDC**

Cable Assembly Configuration: **Single Ended**

Cable Assembly (End A): **HVA630 Plug**

Operating Temperature Range: **-40 – 125 °C [-40 – 257 °F]**

Features

Product Type Features

Cable Assembly (End A)	HVA630 Plug
------------------------	-------------

Electrical Characteristics

Operating Voltage	850 VDC
-------------------	---------

Usage Conditions

Operating Temperature Range	-40 – 125 °C[-40 – 257 °F]
-----------------------------	----------------------------

Other

Cable Assembly Configuration	Single Ended
------------------------------	--------------

Product Compliance

[For compliance documentation, visit the product page on TE.com>](#)

EU RoHS Directive 2011/65/EU	Compliant
EU ELV Directive 2000/53/EC	Compliant
China RoHS 2 Directive MIIT Order No 32, 2016	有害物质含量符合标准要求 No Restricted Substance(s) Above Threshold
EU REACH Regulation (EC) No. 1907/2006	Current ECHA Candidate List: JUNE 2025 (250) Candidate List Declared Against: JUNE 2025 (250) SVHC > Threshold: Decamethylcyclopentasiloxane (D5) (.5% in Component Part) Octamethylcyclotetrasiloxane (D4) (.5% in Component Part)

Dodecamethylcyclohexasiloxane (D6) (.5% in Component Part)

Article Safe Usage Statements:

Wash thoroughly after handling. Recycle if possible and dispose of the article by following all applicable governmental regulations relevant to your geographic location.

Halogen Content

Low Bromine/Chlorine - Br and Cl < 900 ppm per homogenous material. Also BFR /CFR/PVC Free

Solder Process Capability

Not reviewed for solder process capability

Product Compliance Disclaimer

This information is provided based on reasonable inquiry of our suppliers and represents our current actual knowledge based on the information they provided. This information is subject to change. The part numbers that TE has identified as EU RoHS compliant have a maximum concentration of 0.1% by weight in homogenous materials for lead, hexavalent chromium, mercury, PBB, PBDE, DBP, BBP, DEHP, DIBP, and 0.01% for cadmium, or qualify for an exemption to these limits as defined in the Annexes of Directive 2011/65/EU (RoHS2). Finished electrical and electronic equipment products will be CE marked as required by Directive 2011/65/EU. Components may not be CE marked. Additionally, the part numbers that TE has identified as EU ELV compliant have a maximum concentration of 0.1% by weight in homogenous materials for lead, hexavalent chromium, and mercury, and 0.01% for cadmium, or qualify for an exemption to these limits as defined in the Annexes of Directive 2000/53/EC (ELV). Regarding the REACH Regulation, the information TE provides on SVHC in articles for this part number is based on the latest European Chemicals Agency (ECHA) 'Guidance on requirements for substances in articles' posted at this URL: <https://echa.europa.eu/guidance-documents/guidance-on-reach>

Compatible Parts



TE Part # 2335500-1
HF-20 TERMINATOR, 400V




TE Part # CAT-HVH5375
High-Voltage Header




TE Part # YHVA630-2PHI-HDR-A
HVA630 2P (1-2141272-1) HEADER, KEY A

Also in the Series | HVA 630




Automotive Connector Caps & Covers (1)



Automotive E-Mobility Connector Housings(5)



Automotive E-Mobility Headers(2)



Automotive Housings(5)



Electric, Hybrid & Fuel Cell Cable Assemblies(7)

Customers Also Bought



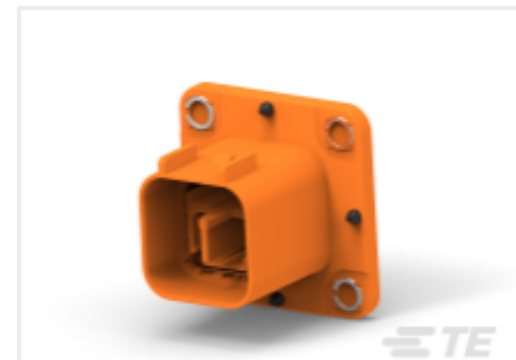
TE Part #1929494001
RNF-3000-18/6-2-SP



TE Part #YHV280-2PM-S-4MM-A
HVA280-2PHM,SHUNTED,4SQMM,
KEY A



TE Part #T4145535051-001
M12 R/A F PNL STAMPED PIN D-
CODE 5P SHLD



TE Part #2141272-1
2POS,HVA630,180DEG,HEADER,COD
A



TE Part #1-2176250-5
TJT 500W 220R 5%



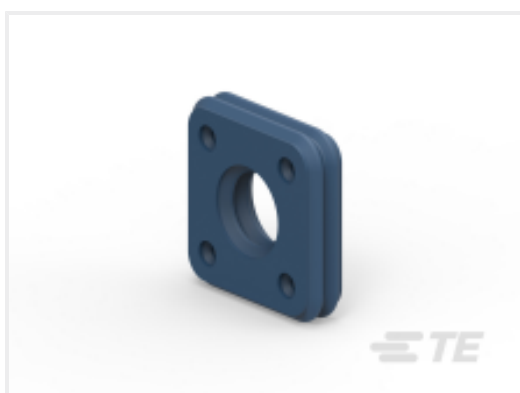
TE Part #2103153-1
SPACER, HVA280-2PHM



TE Part #2103177-4
PLUG ASSY, KEY D, TA,CPA, HVA280-
2PHI XE



TE Part #1-2141256-1
2POS,AMP MCP6.3/4.8K,REC HSG,
COD.A,ASSY



TE Part #2141264-3
SINGLE WIRE SEAL,AMP MCP6.3/4.8K



TE Part #2310213-2
2POS,PCON12,REC HSG ASSY,90DEG,
SLD,COD B

Documents

[CAD Files](#)

[3D PDF](#)

[3D](#)

[Customer View Model](#)

[ENG_CVM_CVM_YHVA630-2PHM-4MM-A_A.2d_dxf.zip](#)

English

[Customer View Model](#)

[ENG_CVM_CVM_YHVA630-2PHM-4MM-A_A.3d_igs.zip](#)



English

Customer View Model

[ENG_CVM_CVM_YHVA630-2PHM-4MM-A_A.3d_stp.zip](#)

English

By downloading the CAD file I accept and agree to the [Terms and Conditions](#) of use.

Datasheets & Catalog Pages

[HIVONEX CONNECTORS & CHARGING SOLUTIONS](#)

English

[HEMS Sample Kit YHVA630-2phm-4mm-A](#)

English

Product Specifications

[Application Specification](#)

English