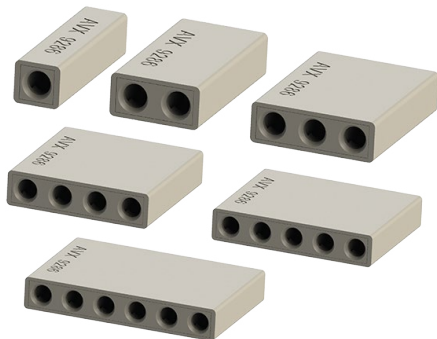


REDUCED THRU WIRE CONNECTOR 18-24 AWG: 9286-200



General Information



Wire-to-Wire (WTW) connectors have been used in the industrial market for years with traditional 2-piece (plug & socket) connector systems. These require crimp and poke wire terminations to connect discrete wires. While these provide repeated mating and locking, they are often size and cost prohibitive in applications where the wires may only need to be replaced once or twice during their lifetime.

The reduced 9286-200 series of thru-wire connectors extends WTW's already proven 9286 poke-home discrete connector family, but in a smaller package size. The development of an active stainless steel spring contact eliminates the need for push-button activation for wire insertion and removal, resulting in significant cost savings. The mechanical properties of this contact provide maximum wire retention over a wide range of solid and stranded wire gauges, making this connector very versatile in field installations.

APPLICATIONS

- Industrial Machine Controls; motors, drives, solenoids, sensors, fans, pumps, etc...
- Commercial Buildings; controls, security, fire and sensors
- Smart Grid; meters, breakers and panels
- SSL/LED; fixtures, signage and streetlights
- Application Notes: Refer to 201-01-172
- Product Specification: Refer to 201-01-171

FEATURES AND BENEFITS

- Simple strip and poke-home wire insertion with twist and pull wire extraction
- High spring force stainless steel contact maximizes cost, strength and flexibility
- Accepts 18-24 AWG solid and stranded wires
- Expanded size offering to cover multiple power and signal applications: 1p-6p
- UL approved

ELECTRICAL

- Current Rating: See matrix below
- Voltage Rating: 300 VAC (RMS) or DC equivalent

ENVIRONMENTAL

- Operating Temperature: -40°C to +130°C
- Storage Temperature: -40°C to +80°C

MECHANICAL

- Insulator Material: Glass-Filled Nylon 46; UL94V0
- Fixed Contact Material: Copper Alloy
- Flexing Contact: Stainless Steel
- Fixed Contact Plating: Tin over Nickel
- Durability: 5 Cycles

HOW TO ORDER

00	9286	00X	203	9	X	6
Prefix	Series	Number of Ways	Wire Size	Insulator Color	Internal Wire Stop	Plating Option
				9 = White (Standard)	0 = No Wire Stop 1 = With Wire Stop	6 = Tin all over

Code	No of POS.	DIM. A
001	1	4.0/4.5
002	2	8.0/8.5
003	3	12.0/12.5
004	4	16.0/16.5
005	5	20.0/20.5
006	6	24.0/24.5

Code	Wire Gauge	Max Insulation
203	18 - 24 AWG	2.10mm DIA.

SALES DRAWINGS
CLICK TO DOWNLOAD



CURRENT RATING

Wire gauge	Maximum approved current (amps)	
	UL (USA)	UL (Canada)
18 AWG	8	8
20 AWG	6	4
22 AWG	5	4
24 AWG	3	2

Safety Standards: UL 1977-File #E90723, CSA C22.2 NO. 182.3