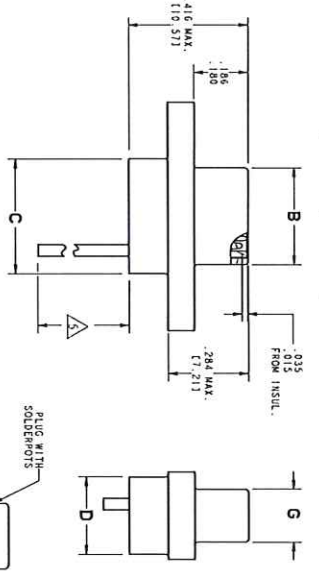
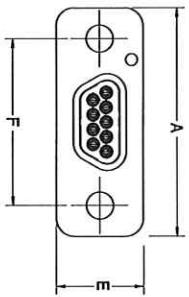
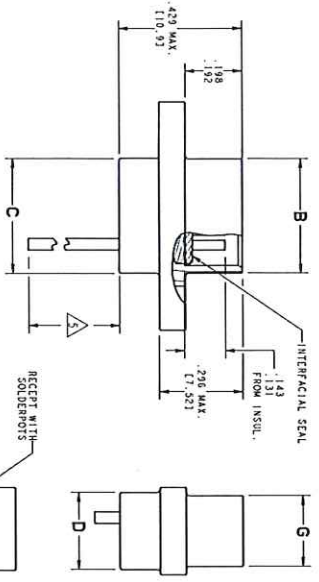
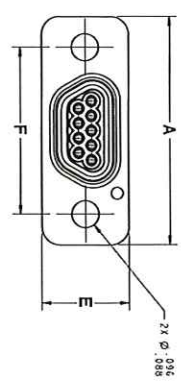


THIS IS A DRAWING OF A PRODUCT UNDER DEVELOPMENT. THE DRAWING IS NOT TO BE USED FOR MANUFACTURING OR FOR THE DESIGN OF OTHER PRODUCTS. IT IS THE PROPERTY OF ITT CANON AND IS NOT TO BE REPRODUCED OR TRANSMITTED IN ANY FORM OR BY ANY MEANS, ELECTRONIC OR MECHANICAL, INCLUDING PHOTOCOPYING, RECORDING, OR BY ANY INFORMATION STORAGE AND RETRIEVAL SYSTEM.



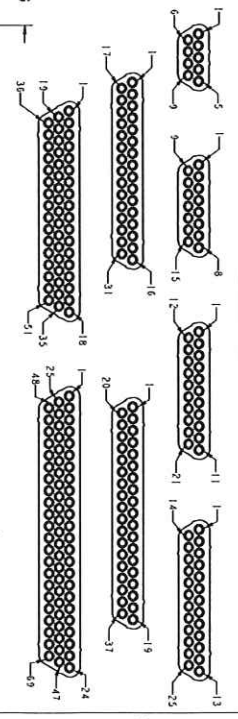
RECEPTACLE

SIZE	A	B	C	D	E	F	G
MDM-5S	.785	.398	.400			.565	
MDM-1S	.935	.548	.550			.715	
MDM-21S	1.085	.698	.700	.210	.308	.865	.249
MDM-23S	1.185	.798	.800			.965	
MDM-31S	1.335	.948	.950			1.115	
MDM-31S	1.485	1.098	1.100			1.265	
MDM-61S	1.435	1.048	1.050	.310	.351	1.215	.292
MDM-69S	1.735	1.348	1.350			1.515	

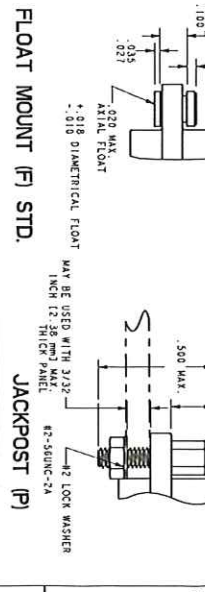
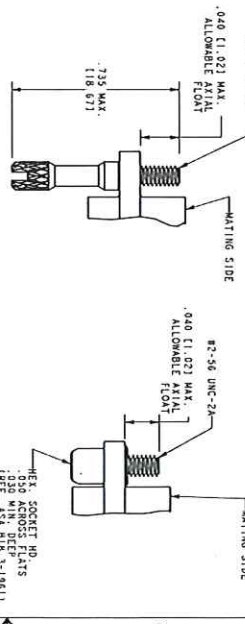
SOLDER CONFIGURATION (SIZE S1 SHOWN)

SIZE	A	B	C	D	E	F	G
MDM-9P	.785	.334	.400			.565	
MDM-19P	.935	.484	.550			.715	
MDM-21P	1.085	.634	.700	.210	.308	.865	.185
MDM-23P	1.185	.734	.800			.965	
MDM-31P	1.335	.884	.950			1.115	
MDM-31P	1.485	1.034	1.100			1.265	
MDM-51P	1.435	.984	1.050	.310	.351	1.215	.228
MDM-69P	1.735	1.284	1.350			1.515	

PLUG



STANDARD LAYOUTS (FACE VIEW OF PIN INSULATOR) MOUNTING HARDWARE



NOTES: UNLESS OTHERWISE SPECIFIED

- MATERIAL & FINISHES
 - A. INSULATION: THERMOPLASTIC PER MIL-STD-21319
 - B. INTERFACIAL SEAL: SILICONE RUBBER
 - C. MOUNTING HARDWARE: STAINLESS STEEL (SERIES 300)
 - D. INTERFACIAL SEAL: SILICONE RUBBER
 - E. CONTACTS: COPPER ALLOY WITH 50 PERCENT GOLD PLATING
- IDENTIFICATION NUMBERS ARE FOR ENGAGING SIDE OF PLUG INSULATOR FOR RECEPTACLE INSULATORS USE REVERSE ORDER.
- STANDARD PRODUCT IDENTIFICATION PART NUMBERS ARE FOR REFERENCE ONLY AND DO NOT APPEAR ON SYMBOL, DATE CODE AND MANUFACTURER'S PART NUMBER. WHERE SPACE DOES NOT ALLOW COMPLETE MARKING ON ONE SIDE, MARKING SHALL BE IN ORDER LISTED.
- CENTER NON SOLDERPOINTS ARE USED ON MDM-31P, MDM-31S, MDM-69P AND MDM-69S ONLY.
- PICTALL LEAD OR HARDNESS LENGTH TO BE SPECIFIED BY CUSTOMER. STANDARD PICTALL IS 1/2" MIN. LENGTH .425 ANG GOLD PLATED CU. HANDES: 18" MIN. LENGTH R28 AND YELLOW TFE INSULATION TFE: 18" MIN. LENGTH R28 AND YELLOW TFE INSULATION TFE: 1.982 ± 0.15 PICTALL.
- CONSULT FACTOR FOR RHM COMPLIANCE.

ROHS COMPLIANCE CODE	REMARKS
NTC	not RoHS compliant
MDM	RoHS part (1-14pp (280°C))
NOTE	REFER TO TABLE NOTES

NOTE	REVISION	DATE	BY	CHKD	APP'D
1					
2					

COMMERCIAL PRINTED COPIES ARE NOT MAINTAINED TO LATEST REVISION.

REV	DATE	DESCRIPTION	BY	CHKD	APP'D
1	00015590-CR	UPDATE TO ADD MDM SIZE 69			
2	025693Y0000	UPDATE TO ADD MDM SIZE 69			

