

# Actuator

704.033.7

Distribution by  
DigiKey

**DigiKey**



<https://digkey.eao.com/component/704.033.7/e...>

Your product:

---



## 704.033.7 Actuator

### FRONT

|                              |                      |
|------------------------------|----------------------|
| <b>Front dimension:</b>      | Ø 29 mm              |
| <b>Front form:</b>           | Round                |
| <b>Front bezel colour:</b>   | Nature               |
| <b>Front bezel material:</b> | Aluminium            |
| <b>Front bezel shape:</b>    | With protective hood |

### MOUNTING

|                       |                |
|-----------------------|----------------|
| <b>Design:</b>        | Raised         |
| <b>Mounting type:</b> | Panel mounting |

### OPERATING-/INDICATION PART

|                           |             |
|---------------------------|-------------|
| <b>Lens colour:</b>       | Colourless  |
| <b>Lens material:</b>     | Plastic     |
| <b>Lens illumination:</b> | Illuminated |
| <b>Lens shape:</b>        | Flush       |
| <b>Lens optics:</b>       | transparent |

### ELECTRICAL CHARACTERISTICS

|                   |   |
|-------------------|---|
| <b>Standards:</b> | The switches comply with the "Standards for low-voltage switching devices" DIN EN 60947-1 |
|-------------------|---|

### MECHANICAL CHARACTERISTICS

|                          |           |
|--------------------------|-----------|
| <b>Switching action:</b> | Momentary |
|--------------------------|-----------|

**Mechanical lifetime:** ≤3 Mil. cycles of operation  
**Operating force:** 8 N  
**Operating Travel:** ca. 5.8 mm ± 0.2 mm  
**Weight:** 0.04 kg

### AMBIENT CONDITION

**IP Protection:** IP65 front side  
**Operating temperature:** – 40 °C ... + 55 °C  
**Storage temperature:** – 40 °C ... + 85 °C

### CERTIFICATE

**REACH:** REACH compliant  
**RoHS:** RoHS compliant

### OTHER

**Short Description:** Actuator, Ø 29 mm, Flush, Illuminated, Colourless, Plastic, transparent, Round, With protective hood, Nature, Aluminium, anodised, Momentary

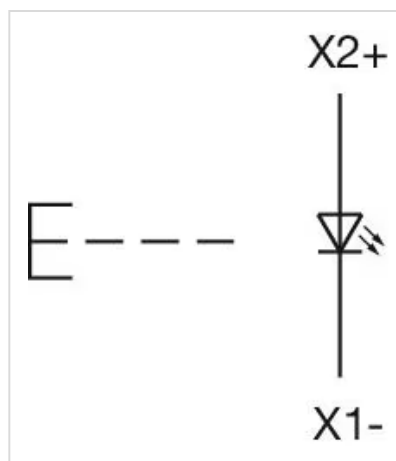
**Housing colour:** Grey

**Housing material:** Plastic

**Hints:** Frontring with protective cover to be mounted with a torque of 0.4 Nm onto actuator  
Max. 3 switching elements can be clipped on  
The lamp block will be delivered with screw terminal

**max. number of switching elements:** 3

**Wiring diagrams:**

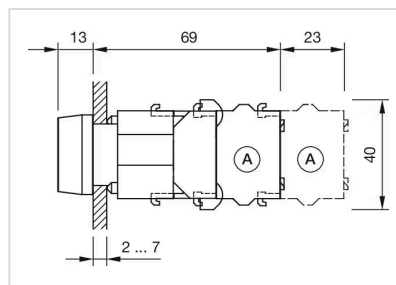


**Mounting cut-outs:**



- A = Screw terminal
- B = Push-in terminal (PIT)
- C = Plug-in terminal 6.3 mm x 0.8 mm
- D = Double plug-in terminal 6.3 mm x 0.8 mm

**Dimension drawings:**



- A = Screw terminal