

THRU-HOLE (THM) & SURFACE MOUNT (SMT) COIN CELL HOLDERS



24mm to 30mm COIN CELL HOLDERS

24mm



Thru Hole Mount

- Advanced air-flow design enhances air circulation around battery
- Unique notched slots assure quick and easy battery insertion and replacement

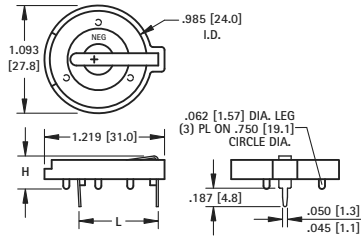
MATERIAL:

Base: PBT, UL Rated 94V-0

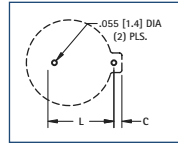
Contacts: .020 (.50) Spring Steel, Tin-Nickel Plate

Operating Temperature: -60°F to +293°F (-50°C to +145°C)

CAT. NO.	C	H	L	NO. OF CELLS	BATTERY REFERENCE
105	.074 (1.9)	.335 (8.5)	.805 (20.5)	(1) 2430	CR2430, CL2430, BR2450, CR2477
1025	.074 (1.9)	.452 (11.5)	.805 (20.5)	(1) 2450 (2) 2430	
1025-7	.074 (1.9)	.503 (12.8)	.805 (20.5)	(1) 2477 (2) 2430	



Mounting Detail



24mm VERTICAL



Thru Hole Mount

- Polarized holder
- Mounts securely for wave soldering
- Reliable spring tension assures low contact resistance

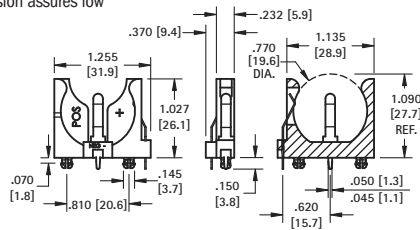
MATERIAL:

Base: PBT, UL Rated 94V-0

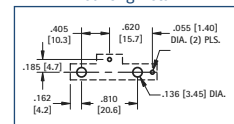
Contacts: .020 (.50) Spring Steel, Tin-Nickel Plate

Operating Temperature: -60°F to +293°F (-50°C to +145°C)

CAT. NO.	BATTERY REFERENCE
1068	(1) CR2450, (1) CL2450

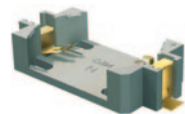


Mounting Detail



24mm TOP Loading

AVAILABLE ON TAPE AND REEL



Surface Mount

- Polarized holder
- Low profile for densely packed PCB's
- Compatible with vacuum and mechanical pick & place systems
- Conductive carrier tape meets ANSA/EIA- 481 standard

MATERIAL:

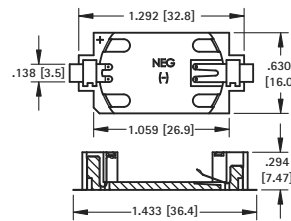
Base: LCP, UL Rated 94V-0

Contacts: .006 (.15) Phosphor Bronze, Gold Plate (Flash)

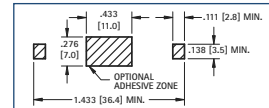
Operating Temperature: -60°F to +293°F (-50°C to +145°C)

CAT. NO.	ON TAPE & REEL	BATTERY REFERENCE
1052	1052TR	(1) CR2450

Tape & Reel Spec's: 56mm wide; 20mm pitch; 13 inch reel, (400 pieces per reel)



Mounting Detail



24mm AUTO-IN/EZ-OUT



Thru Hole Mount

- Battery "Pop-in" from Top for automated assembly
- No tools required
- Finger pressure battery release

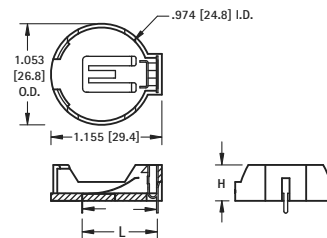
MATERIAL:

Contacts: .008 (.20) Phosphor Bronze, Nickel Plate

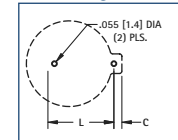
Base: PBT, UL Rated 94V-0

Operating Temperature: -60°F to +293°F (-50°C to +145°C)

CAT. NO.	L	H	C	BATTERY REFERENCE
1053	.788 (20.0)	.374 (9.5)	.048 (1.2)	(1) CR2450
1009	.800 (20.3)	.472 (12.0)	.048 (1.2)	(1) CR2477



Mounting Detail



30mm



Thru Hole Mount

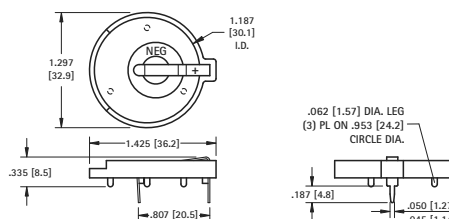
MATERIAL:

Contacts: .020 (.50) Spring Steel, Tin-Nickel Plate

Base: PBT, UL Rated 94V-0

Operating Temperature: -60°F to +293°F (-50°C to +145°C)

CAT. NO.	BATTERY REFERENCE
301	BR3032



Mounting Detail

