

IS280-4



DESCRIPTION

The IS280-4 quad channel optocoupler each channel consists of two infrared emitting diodes in reverse parallel connection optically coupled to an NPN silicon photo transistor.

This device belongs to Isocom Compact Range of Optocouplers.

FEATURES

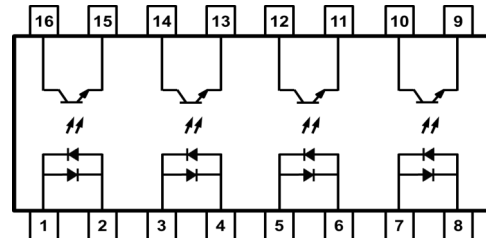
- Half Pitch 1.27mm
- High AC Isolation voltage 3750V_{RMS}
- Wide Operating Temperature Range -55°C to 110°C
- Pb Free and RoHS Compliant
- UL Approval E91231 Model "AHP4"

APPLICATIONS

- Hybrid Substrates with High Density Mounting
- Industrial System Controllers
- Measuring Instruments
- System Appliances

ORDER INFORMATION

- Available in Tape and Reel
IS280-4 : 2000pcs per reel



1, 3, 5, 7 Anode / Cathode 9, 11, 13, 15 Emitter
2, 4, 6, 8 Cathode / Anode 10, 12, 14, 16 Collector

ABSOLUTE MAXIMUM RATINGS (T_A = 25°C)

Stresses exceeding the absolute maximum ratings can cause permanent damage to the device. Exposure to absolute maximum ratings for long periods of time can adversely affect reliability.

Input

Forward Current	±50mA
Power dissipation	65mW

Output

Collector to Emitter Voltage BV _{CEO}	80V
Emitter to Collector Voltage BV _{ECO}	7V
Collector Current	50mA
Junction Temperature	125°C
Power Dissipation	100mW

Total Package

Isolation Voltage	3750V _{RMS}
Total Power Dissipation	170mW
Operating Temperature	-55 to 110 °C
Storage Temperature	-55 to 150 °C
Lead Soldering Temperature (10s)	260°C

ISOCOM COMPONENTS 2004 LTD

Unit 25B, Park View Road West, Park View Industrial Estate
Hartlepool, Cleveland, TS25 1PE, United Kingdom
Tel : +44 (0)1429 863 609 Fax : +44 (0)1429 863 581
e-mail : sales@isocom.co.uk
<http://www.isocom.com>

ISOCOM COMPONENTS ASIA LTD

Hong Kong Office
Block A, 8/F, Wah Hing Industrial Mansions
36 Tai Yau Street, San Po Kong, Kowloon, Hong Kong
Tel : +852 2995 9217 Fax : +852 8161 6292
e-mail : sales@isocom.com.hk

IS280-4

ELECTRICAL CHARACTERISTICS ($T_A = 25^\circ\text{C}$ unless otherwise specified)

INPUT

Parameter	Symbol	Test Condition	Min	Typ.	Max	Unit
Forward Voltage	V_F	$I_F = \pm 20\text{mA}$		1.2	1.4	V
Terminal Capacitance	C_{IN}	$V = 0\text{V}, f = 1\text{KHz}$		60		pF

OUTPUT

Parameter	Symbol	Test Condition	Min	Typ.	Max	Unit
Collector-Emitter Breakdown Voltage	BV_{CEO}	$I_C = 0.1\text{mA}, I_F = 0\text{mA}$	80			V
Emitter-Collector Breakdown Voltage	BV_{ECO}	$I_E = 10\mu\text{A}, I_F = 0\text{mA}$	7			V
Collector-Emitter Dark Current	I_{CEO}	$V_{CE} = 20\text{V}, I_F = 0\text{mA}$			100	nA

COUPLED

Parameter	Symbol	Test Condition	Min	Typ.	Max	Unit
Current transfer ratio	CTR	$I_F = \pm 1\text{mA}, V_{CE} = 5\text{V}$	20		400	%
Collector-Emitter Saturation Voltage	$V_{CE(sat)}$	$I_F = \pm 8\text{mA}, I_C = 2.4\text{mA}$			0.4	V
Floating Capacitance	C_f	$V_F = 0\text{V}, f = 1\text{MHz}$		0.8	1	pF
Output Rise Time	t_r	$V_{CE} = 2\text{V}$ $I_C = \pm 2\text{mA}$ $R_L = 100\Omega$		3	18	μs
Output Fall Time	t_f			4	18	

ISOLATION

Parameter	Symbol	Test Condition	Min	Typ.	Max	Unit
Isolation Voltage	V_{ISO}	R.H. = 40% to 60%, $t = 1\text{min}$ Note 1	3750			V_{RMS}
Input - Output Resistance	R_{I-O}	$V_{I-O} = 500\text{VDC}$ R.H. = 40% to 60% Note 1	5×10^{10}	1×10^{11}		Ω

Note 1 : Measured with input leads shorted together and output leads shorted together.

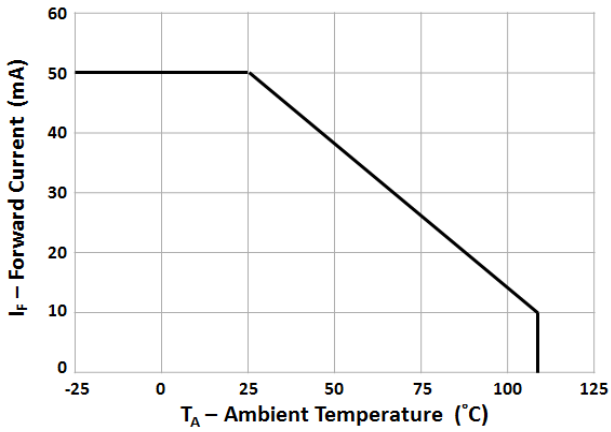


Fig 1 Forward Current vs Ambient Temperature

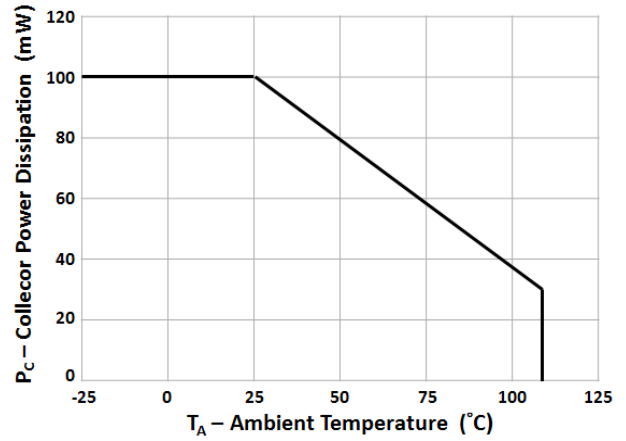


Fig 2 Output Power Dissipation vs Ambient Temperature

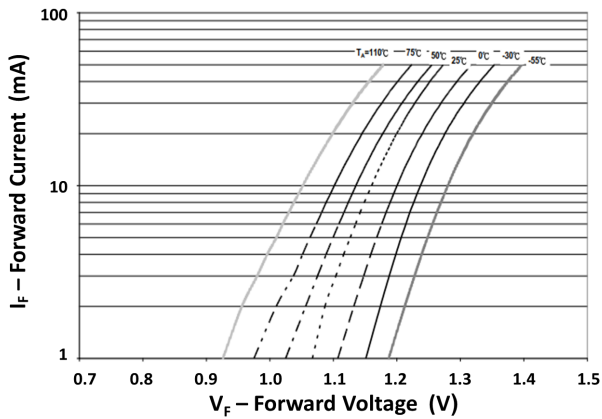


Fig 3 Forward Current vs Forward Voltage

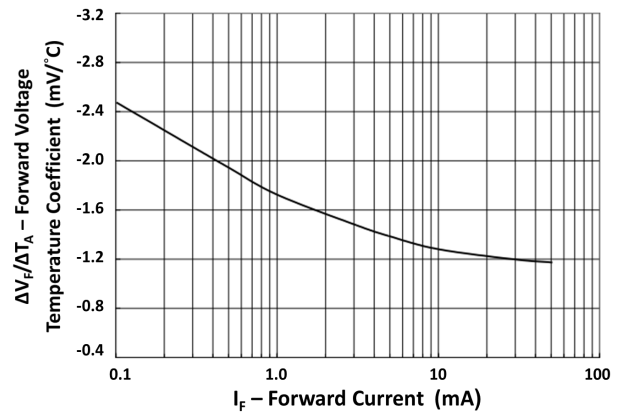


Fig 4 Forward Voltage Temperature Coefficient vs Forward Current

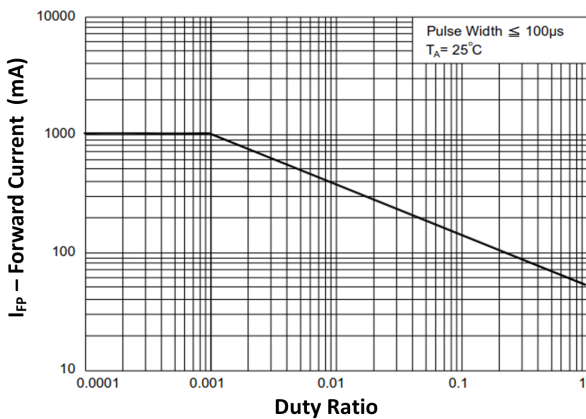


Fig 5 Pulsed Forward Current vs Duty Ratio

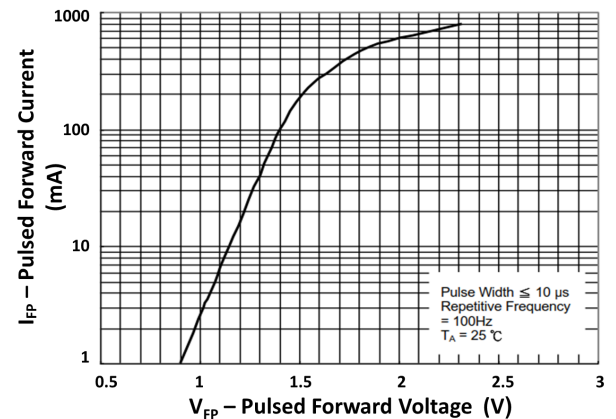


Fig 6 Pulsed Forward Current vs Pulsed Forward Voltage

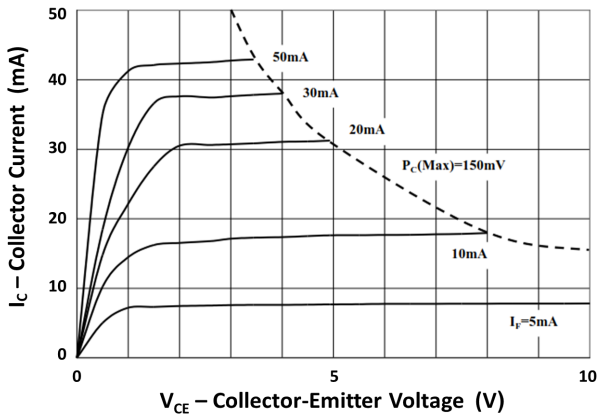


Fig 7 Collector Current vs Collector-Emitter Voltage (1)

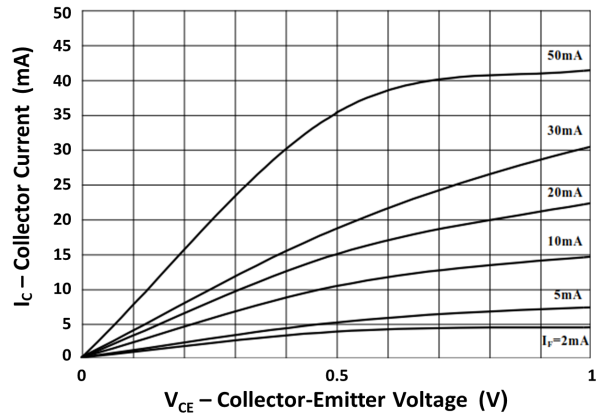


Fig 8 Collector Current vs Collector-Emitter Voltage (2)

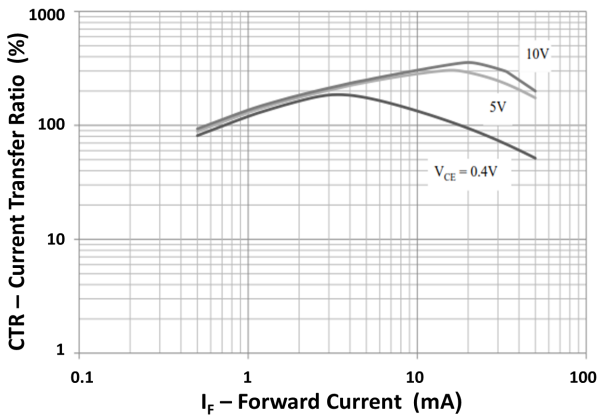


Fig 9 Current Transfer Ratio vs Forward Current

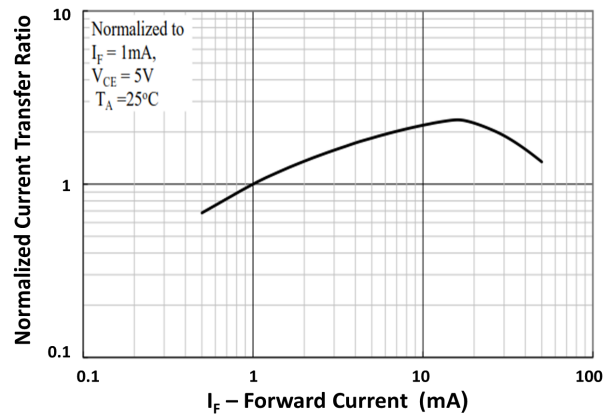


Fig 10 Normalized Current Transfer Ratio vs Forward Current

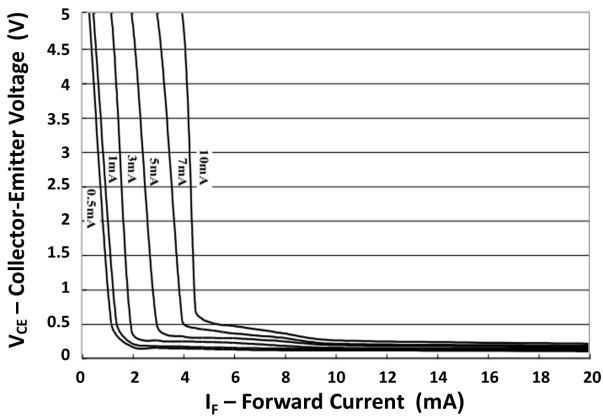


Fig 11 Collector-Emitter Voltage vs Forward Current

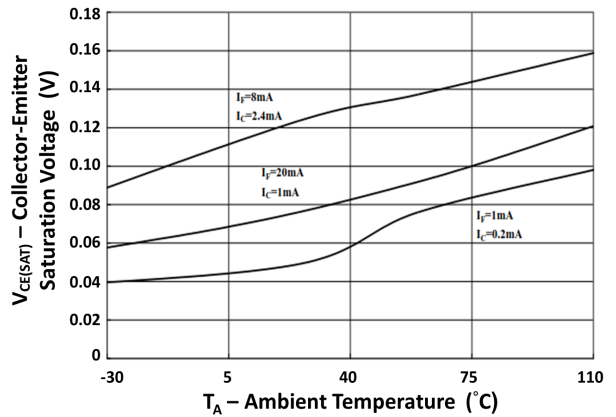


Fig 12 Collector-Emitter Saturation Voltage vs Ambient Temperature

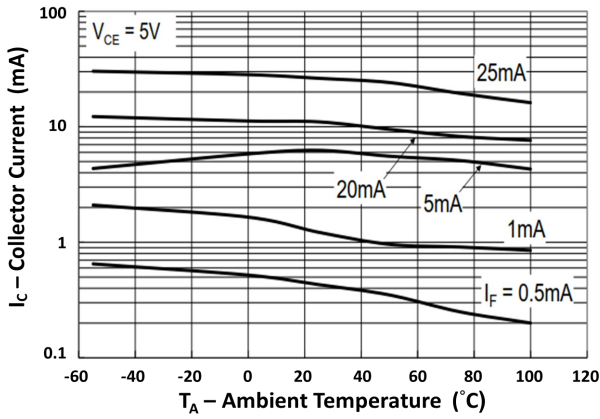


Fig 13 Collector Current vs Ambient Temperature

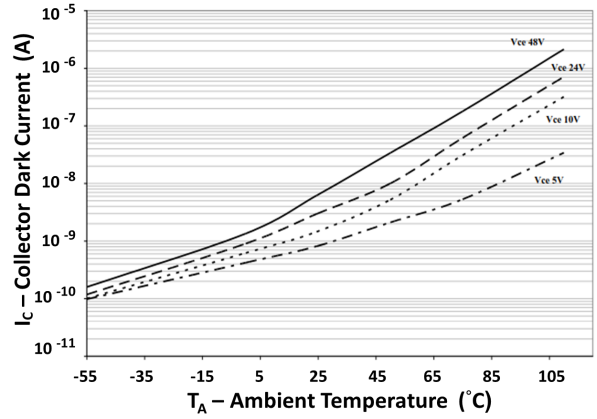


Fig 14 Collector Dark Current vs Ambient Temperature

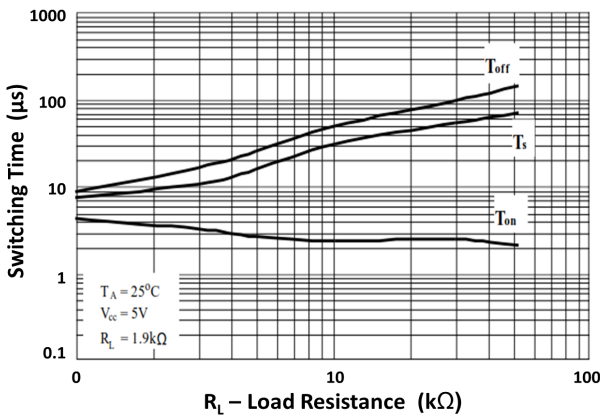


Fig 15 Switching Time vs Load Resistance

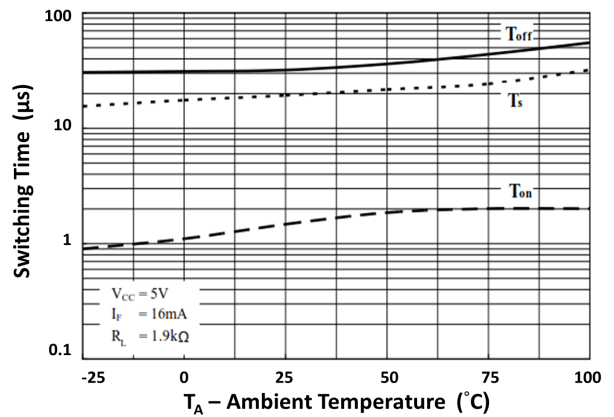


Fig 16 Switching Time vs Ambient Temperature

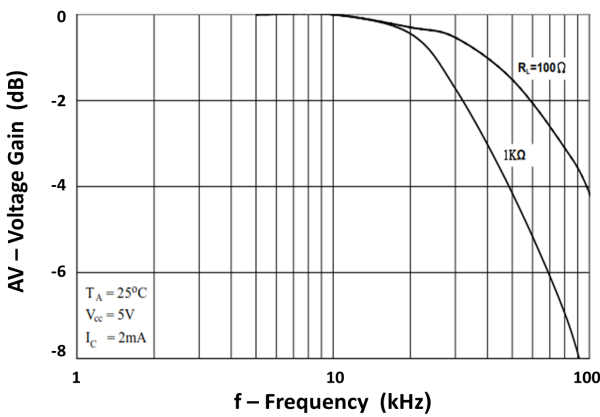
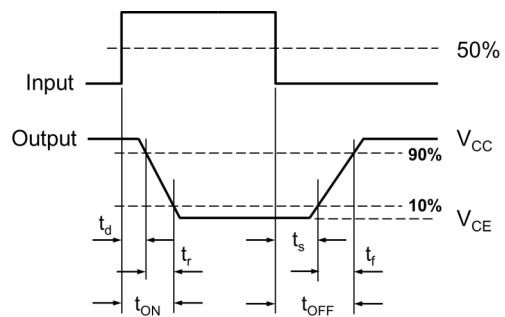
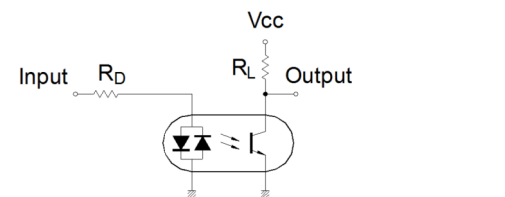


Fig 17 Frequency Response



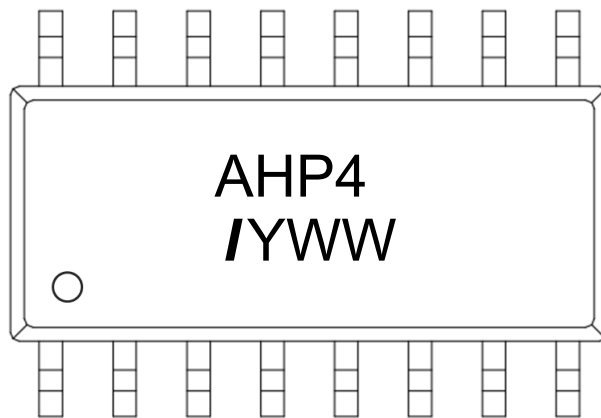
Switching Time Test Circuit

IS280-4

ORDER INFORMATION

IS280-4			
After PN	PN	Description	Packing quantity
None	IS280-4	Surface Mount Tape & Reel	2000 pcs per reel

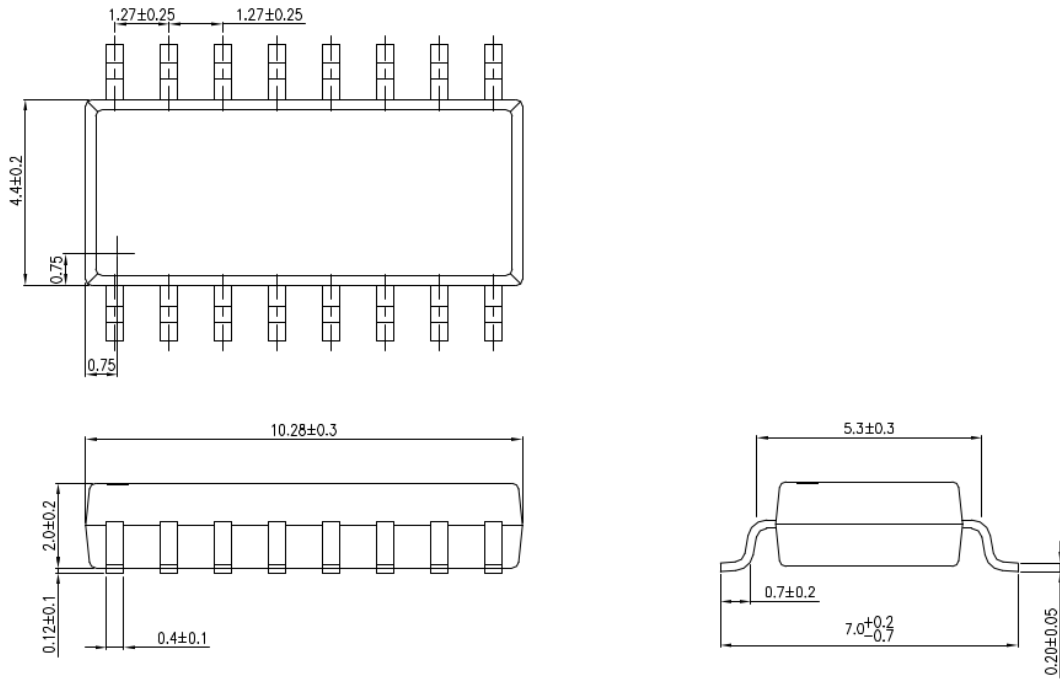
DEVICE MARKING



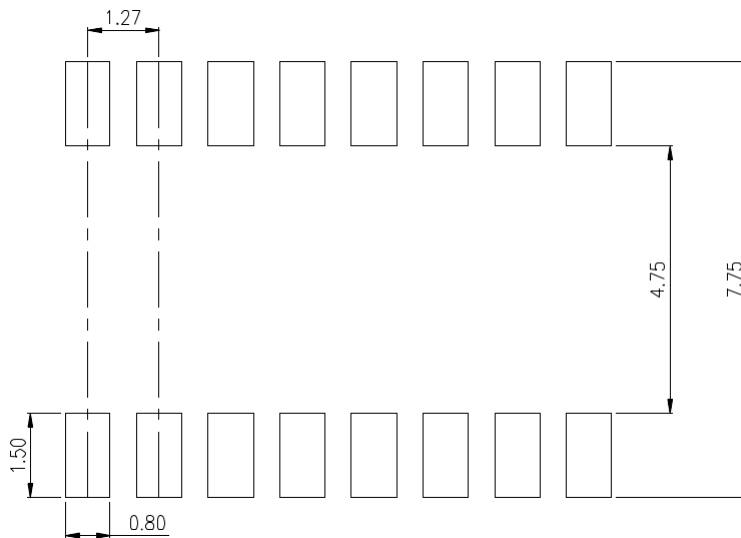
AHP4	IS280-4
I	Isocom
Y	Year Code (A = 2010, B = 2011, etc.)
WW	2 digit Week Code

IS280-4

PACKAGE DIMENSIONS (mm)

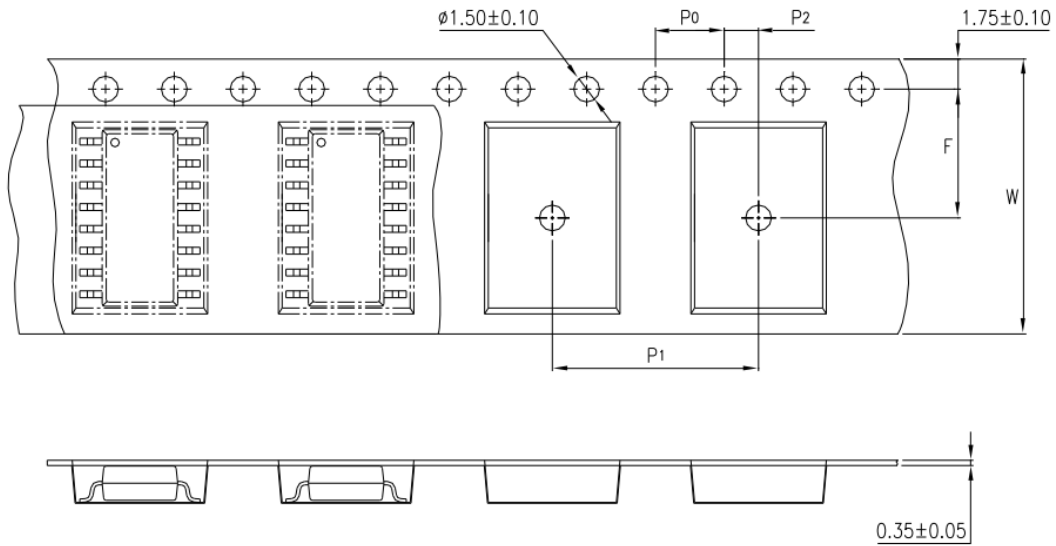


RECOMMENDED SOLDER PAD LAYOUT (mm)



IS280-4

TAPE AND REEL PACKAGING

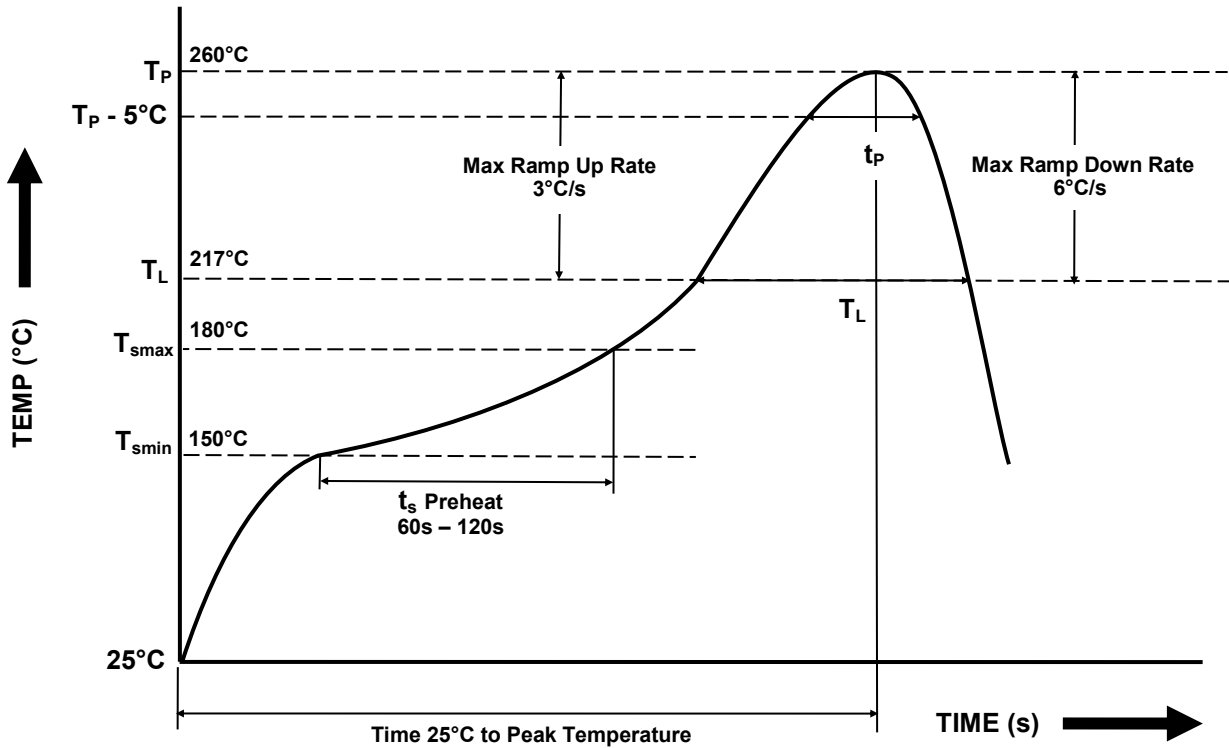


Description	Dimension	mm (inch)
Tape Width	W	16 ± 0.3 (0.63)
Pitch of Sprocket Holes	P0	4 ± 0.1 (0.15)
Distance of Compartment	F	7.5 ± 0.1 (0.295)
	P2	2 ± 0.1 (0.079)
Distance of Compartment to Compartment	P1	12 ± 0.1 (0.472)

IS280-4

IR REFLOW SOLDERING TEMPERATURE PROFILE

One Time Reflow Soldering is Recommended.
Do not immerse device body in solder paste.



Profile Details	Conditions
Preheat - Min Temperature (T _{SMIN}) - Max Temperature (T _{SMAX}) - Time T _{SMIN} to T _{SMAX} (t _s)	150°C 180°C 60s - 120s
Soldering Zone - Peak Temperature (T _P) - Liquidous Temperature (T _L) - Time within 5°C of Actual Peak Temperature (T _P - 5°C) - Time maintained above T _L (t _L) - Ramp Up Rate (T _L to T _P) - Ramp Down Rate (T _P to T _L)	260°C 217°C 20s 60s 3°C/s max 3 - 6°C/s
Average Ramp Up Rate (T _{smax} to T _P)	3°C/s max
Time 25°C to Peak Temperature	8 minutes max



DISCLAIMER

Isocom Components is continually working to improve the quality and reliability of its products. Nevertheless, semiconductor devices in general can malfunction or fail due to their inherent electrical sensitivity and vulnerability to physical stress. It is the responsibility of the buyer, when utilizing Isocom Components products, to comply with the standards of safety in making a safe design for the entire system, and to avoid situations in which a malfunction or failure of such Isocom Components products could cause loss of human life, bodily injury or damage to property.

In developing your designs, please ensure that Isocom Components products are used within specified operating ranges as set forth in the most recent Isocom Components products specifications.

The Isocom Components products listed in this document are intended for usage in general electronics applications (computer, personal equipment, office equipment, measuring equipment, industrial robotics, domestic appliances, etc.). These Isocom Components products are neither intended nor warranted for usage in equipment that requires extraordinarily high quality and/or reliability or a malfunction or failure of which may cause loss of human life or bodily injury ("Unintended Usage"). Unintended Usage include atomic energy control instruments, airplane or spaceship instruments, transportation Instruments, traffic signal instruments, combustion control instruments, medical Instruments, all types of safety devices, etc... Unintended Usage of Isocom Components products listed in this document shall be made at the customer's own risk.

Gallium arsenide (GaAs) is a substance used in the products described in this document. GaAs dust and fumes are toxic. Do not break, cut or pulverize the product, or use chemicals to dissolve them. When disposing of the products, follow the appropriate regulations. Do not dispose of the products with other industrial waste or with domestic garbage.

The products described in this document are subject to the foreign exchange and foreign trade laws.

The information contained herein is presented only as a guide for the applications of our products. No responsibility is assumed by Isocom Components for any infringements of intellectual property or other rights of the third parties which may result from its use. No license is granted by implication or otherwise under any intellectual property or other rights of Isocom Components or others.